

# ANGELOS

KAPPA DELTA SORORITY FALL 2019

+ FIVE WAYS  
CONVENTION  
INSPIRED US

+ THREE REASONS  
TO CONNECT WITH  
KD SISTERS

## DISCOVER KAPPA DELTA



12 COLLEGIANS SHARE  
THEIR KD STORIES





18

COVER  
STORY

DISCOVER

KAPPA DELTA

12 COLLEGIANS SHARE  
THEIR KD STORIES

## in every issue

- 04 KD NEWS AND EVENTS
- 09 KD DID IT
- 16 GO CONFIDENTLY
- 18 MY KD STORY
- 44 INSPIRED ACTION
- 45 SISTORY
- 48 IN MEMORIAM
- 50 KD POLL

## just this issue

- 30 NATIONAL COUNCIL
- 32 CONVENTION AWARDS
- 39 SCHOLARSHIPS
- 43 FOUNDATION BOARD OF DIRECTORS
- 46 RETIRING NATIONAL COUNCIL TRIBUTES

fall 2019



# ◀◀◀ features



## FOUNDERS DAY MESSAGE

Would Julia, Lenora, Mary and Sara recognize Kappa Delta today?



## LDCs LEAD WITH CONFIDENCE

2019-2020 leadership development consultants encourage chapters and members.



## THE POWER OF FRIENDSHIP

Here are three reasons to connect with KD sisters.



## FIVE WAYS CONVENTION INSPIRED US

The 63rd Biennial National Convention lived up to its theme, *Inspire*.

# ANGELOS

vol. 93, no. 5

**EDITOR**Sherry Egan Anderson  
Delta Gamma-Western Kentucky**DESIGN**Lindsey Archer  
Zeta Tau Alpha-Mississippi State**PHOTOGRAPHY**Kristen Archer  
Delta Pi-Middle Tennessee State**DIRECTOR OF COMMUNICATIONS**Heidi Moore Roy  
Alpha Alpha-Michigan State**CONTRIBUTORS**Shirley McCann Gee  
Pamela Nix  
Rachel Joines Shouse  
Tricia Ruma Spence  
Kathy Davis Sturgis  
Catherine Wylie**EDITORIAL DEADLINES**Winter — October 1  
Spring — January 1  
Summer — April 1  
Fall — July 1

The Angelos of Kappa Delta (USPS 025-680), official magazine of the sorority, is published quarterly by Kappa Delta Sorority Inc., 3205 Players Lane, Memphis, TN 38125. Periodical postage paid at Memphis, Tennessee, and additional offices.

**POSTMASTER**

Send address changes to:  
The Angelos, Kappa Delta Sorority Inc.,  
3205 Players Lane, Memphis, TN 38125

© 2019 Kappa Delta Sorority Inc.  
Member, National Panhellenic  
Communications Conference and  
Fraternity Communications Association



FRATERNITY  
COMMUNICATIONS  
ASSOCIATION

# you are more confident when ...

BY PAMELA NIX, EXECUTIVE DIRECTOR

How do you build your confidence? The most recent answer I heard was at the foundation appreciation dinner at National Convention. Sigma Sigma-Iowa State alumna Jane McMillin Brownlee said to me, “When you know what to do, you are more confident.” It sounds so simple.

In my convention workshop with collegians, I’m confident. Why? I know how to teach, I wrote the curriculum, and I wear a suit. But there are hundreds of times in a given week, that my confidence is challenged.

Launching the *Discover KD* campaign at National Convention was another story. I always practice my remarks. However, I wondered if I could deliver them with the right tone and emotion in that moment to connect with the audience. That is hard to do and something that always challenges my confidence, because I feel the pressure of how many people worked on the project and are counting on me to sell it.

Building confidence often requires us to be vulnerable, admit we do not know everything and ask for help, but we can reach out to those who have expertise or experience managing through a similar challenge.

A couple of years ago, I was asked to give the tribute speech at convention for outgoing National President Alison Jakes Argersinger. A tribute speech can be emotional, and I did not want to cry. So, I asked for help from a sister who has given many speeches and never cries. Corrie Anding Stegall said: “Ballrooms

almost always have ugly carpet. Think about how ugly the carpet is. It’s always in the periphery of your vision. Use it to help keep your thoughts centered and focused on the audience, not your own emotions.” Her advice worked like a charm, and I was so happy not to “ugly cry” in front of 1,000 sisters!

What situations challenge your confidence? What skills are needed in those situations? Look around you and figure out who does it well. Ask them how they do it. Jane said it best. You are more confident when you know what to do. Use Kappa Delta’s network of sisters and learn what to do. ♦

“When you know what to do, you are more confident.”

— JANE McMILLIN BROWNLEE,  
SIGMA SIGMA-IOWA STATE





# news and events

## KD INTRODUCES PROGRAM FOR COLLEGE SENIORS



Kappa Delta Sorority launched its newest initiative, the Senior Experience, at National Convention this past June. The program consists of six Senior Circles that include group discussions and activities meant to strengthen bonds between members and enhance professional development skills, a Senior Retreat and a Senior Farewell. It encourages seniors to stay engaged in Kappa Delta, which aligns with the sorority's strategic plan.

"We recognize the member experience evolves during a collegian's years in Kappa Delta, and

chapters are challenged to keep seniors engaged," says Susan Stockton, national vice president and project lead. "We want to provide our seniors an even more relevant and engaging member experience during their last year in the chapter."

Ten chapters participated in the pilot program for the 2018-2019 academic year. Throughout the year, the chapters' senior members completed assessment surveys and provided feedback, which was used to adapt the program prior to implementation by all chapters in fall 2019. ♦

## DELEGATES VOTE TO ADOPT REVISED BYLAWS

At National Convention, delegates voted to approve the proposed revised National Bylaws drafted by the 2017-2019 National Bylaws Committee. The existing bylaws were updated to follow best practices for nonprofit organizations like Kappa Delta. The new National Bylaws document is available in the Resource Library at [www.kappadelta.org](http://www.kappadelta.org).

Thank you to the following members who served on the

2017-2019 National Bylaws Committee: Chairman Jody Jenkins Corry, Sigma Phi-Georgia; Sandy Knox Burdsall, Tau-Wisconsin; Abbey Hall, Zeta Omega-Memphis; Laura Freedman Magedoff, Zeta Lambda-Delaware; and special advisor Corre Anding Stegall, Alpha Chi-Louisiana Tech. ♦

## UPCOMING EVENTS

**OCT. 23:** Commemorate Founders Day with your local Kappa Delta chapters and sisters.

**NOV. 1:** Applications due for 2020-2021 leadership development consultants. Go to [www.kappadelta.org/opportunities/leadership-development-consultants](http://www.kappadelta.org/opportunities/leadership-development-consultants).

Applications due for the Corre Anding Stegall Collegiate Leadership Award. For more information, go to [www.kappadelta.org/collegiate-experience-collegiate-honors/](http://www.kappadelta.org/collegiate-experience-collegiate-honors/).

**NOV. 1-3:** Alpha Rho-Maryland 90th anniversary celebration, including Friday evening reception at MilkBoy ArtHouse, Saturday tailgate and Sunday brunch at the chapter house. Tickets are available on Eventbrite. For more information, contact Nichola Merkel, anniversary chairman, at [alpharho90anniversary@gmail.com](mailto:alpharho90anniversary@gmail.com).

**NOV. 2:** Gamma Beta-North Texas celebration of the 10th anniversary of the chapter's reorganization; Homecoming open house, 10 a.m. - 12 p.m., 990 W. Highland St., Denton, Texas.

**NOV. 14:** Celebrate International Girls Day with the girls in your life!

**FEB. 1, 2020:** Applications due for Kappa Delta Foundation undergraduate and graduate scholarships.\*

**FEB. 15, 2020:** Applications due for Undergraduate Interfraternity Institute (UIFI) opportunities through the Kappa Delta Foundation.\* ♦

\*Go to [www.kappadelta.org/opportunities](http://www.kappadelta.org/opportunities).



## KAPPA DELTA VISION STATEMENT:

Kappa Delta Sorority provides experiences that build confidence in women and inspire them to action through the power of lifelong friendship.

## CONNECT WITH KD:

### KAPPA DELTA NATIONAL HEADQUARTERS:

3205 Players Lane  
Memphis, TN 38125  
800.536.1897  
[www.kappadelta.org](http://www.kappadelta.org)

### REPORT DEATH NOTICES:

[www.kappadelta.org/alumnae-life/report-a-deceased-member](http://www.kappadelta.org/alumnae-life/report-a-deceased-member)

### UPDATE MEMBER PROFILE/ADDRESS:

[members.kappadelta.org](http://members.kappadelta.org)

### CONTACT EDITOR:

[sherry.anderson@kappadelta.org](mailto:sherry.anderson@kappadelta.org) or  
901.746.3690

### SUBMIT NEWS AND PHOTOS:

[kdnews@kappadelta.org](mailto:kdnews@kappadelta.org)  
High resolution digital photos are required. Submissions may be mailed to the editor's attention at the address above. Hard copy photos will not be returned. News and photos may be used in other Kappa Delta publications, printed and digital, and may appear on Kappa Delta's social media sites.

### FOLLOW US ON SOCIAL MEDIA:

Facebook: [facebook.com/kappadelta](https://www.facebook.com/kappadelta)  
Instagram: [@kappadeltahq](https://www.instagram.com/kappadeltahq)  
Twitter: [@KappaDeltaHQ](https://twitter.com/KappaDeltaHQ) ♦

## 2019 CHRISTMAS SEAL REVEALED



Amy Becham, Delta Chi-LaGrange, designed this year's festive Christmas seal for the Kappa Delta Foundation. A graphic art and design major initiated in 1987, Amy put her skills to work serving as chapter editor and editor of the campus newspaper. She has remained involved with KD as a member of the Gwinnett County, Georgia, Alumnae Chapter, where she helps with the newsletter and graphic design. That same sense of belonging Amy felt with her collegiate chapter is what she feels today with her alumnae sisters.

Kappa Delta introduced its unique Christmas seal program in 1925. Since then, seals designed annually by a

KD sister have been sent during the holiday season with an appeal. In response, members send tax-deductible donations to the foundation, impacting Kappa Deltas and communities through leadership, educational and philanthropic initiatives.

To ensure you receive your KD Christmas seals every year, make an annual gift, at any amount, to the Kappa Delta Foundation. Gifts received after Oct. 1 will be placed on the mailing list for the following year.

For more information or questions, contact Rachel Shouse at 901.746.3657 or [rachel.shouse@kappadelta.org](mailto:rachel.shouse@kappadelta.org). ♦

## KD COMMUNICATIONS HONORED

At the Fraternity Communications Association's 2019 annual meeting, Kappa Delta received six awards, the most recognition given to any of the 71 member organizations. The awards were first place in both the Greek life and news feature categories for *Anti-Hazing Coalition*, *The Angelos* fall 2018; first place in feature design for *Rainmaker: Art*

*Director Tina Miller Turns Ideas into Reality*, *The Angelos* winter 2019; second place in annual reports for the 2018 Kappa Delta Foundation Annual Report; second place among websites for [www.kappadelta.org](http://www.kappadelta.org); and third place in educational videos for KD's national philanthropy video. ♦



# CHECK OUT OUR NEW ARRIVALS

[www.kappadeltaboutique.com](http://www.kappadeltaboutique.com)



Kappa Delta  
BOUTIQUE



RAKE IN SOME  
*savings*

Kappa Delta sisters could save even more on car insurance with a special discount.

Get a free quote today and see how much you could save.



**GEICO**  
MEMBER DISCOUNT

[geico.com](http://geico.com) | 1-800-368-2734 | Local Agent

Some discounts, coverages, payment plans and features are not available in all states, in all GEICO companies, or in all situations. GEICO contracts with various membership entities and other organizations, but these entities do not underwrite the offered insurance products. Discount amount varies in some states. One group discount applicable per policy. Coverage is individual. In New York a premium reduction may be available. GEICO may not be involved in a formal relationship with each organization; however, you still may qualify for a special discount based on your membership, employment or affiliation with those organizations. GEICO is a registered service mark of Government Employees Insurance Company, Washington, D.C. 20076; a Berkshire Hathaway Inc. subsidiary. © 2019 GEICO

BUILDING CONFIDENCE. INSPIRING ACTION.

# the three things that matter

“In Kappa Delta, it is normal and expected that we’re going to help and support one another.”



**BY TRICIA RUMA SPENCE, NATIONAL PRESIDENT**

I believe my job as national president is to set the ambition level for our organization and to create the conditions that allow us to reach our goals. But the future is ours to create together.

There are three things that matter most for our organization: the relationship with our members, our leadership capabilities and each of us as individuals.

**OUR MEMBERS MATTER.** I believe that Kappa Delta’s competitive strength has always been understanding what it is that women value, evolving to meet their needs, and delivering it through the principles and ideals upon which our organization was founded. Those of us who are honored to lead Kappa Delta are called on to think about our members first, to be forward-looking and to share our point of view with one another. We need to be sister and coach for thousands of members across the entire arc of their lives. In Kappa Delta, it is normal and expected that we’re going to help and support one another.

**LEADERSHIP MATTERS.** As leaders, we must ask tough questions and leverage the collective intelligence of the organization. Only then will we as an organization fashion the right response. We can draw so much satisfaction from the fact that we’ve been doing this for 122 years. Our brand of leadership is fueled by

our shared sense of a higher purpose. It’s rooted in our sisterhood and culture. This is what our core values are all about — how we work together and the respect we have for the contributions of every individual. And so, I believe that when we are at our best, we’re going to be able to adapt and evolve better than any other sorority.

**YOU MATTER.** Kappa Delta is a place of belonging. Our only guiding rule is that our members’ interests come first. As a member of Kappa Delta, you are going to bring your time, your talents, your treasure — and sometimes — your blood, sweat and tears. And together, we have the opportunity to have an experience that is nothing short of mind-blowing. Connect with one another in pursuit of our shared purpose. Immerse yourself in the moments that define us as KDs, those moments that speak to your heart and to our Kappa Delta values of honor, duty and truth.

I am excited, I am eager, and I am so confident about what we are going to do together for our members and for each other. So, let’s get going! ♦



# kd did it:

## ALUMNAE

**SIGMA BETA-MINNESOTA**  
**JANE LARSON REIMAN**

At the University of Minnesota Medical School Commencement this past May, Jane, a retired physician, congratulated the class on behalf of the medical school alumni and on behalf of her class, celebrating its 50th anniversary this year. She shared that she is the third generation in her family to graduate from the medical school. With 30 years between each generation, her grandfather, Edward W. Ostergren, graduated in 1909; her mother, Eva-Jane Ostergren Larson, graduated in 1939; and Jane graduated in 1969.

Jane also shared the bond of Kappa Delta with her mother and two aunts who were initiated into Sigma Beta Chapter: Lenore Ostergren Nimlos, who graduated from the medical school in 1945, and Vera Larson Rodgers. Eva-Jane and Vera were active in the Twin Cities Alumnae Chapter, and Jane has been involved with this group and the Chicago Northwest Suburban AC when she lived in Illinois. She is a charter member of the Rochester, Minnesota, Alumnae Chapter and serves as its secretary/treasurer.

Jane specialized in physical medicine and rehabilitation with a special focus on hand rehabilitation. She practiced at the Mayo Clinic in Rochester; Lutheran General Medical Group in Park Ridge, Illinois; and the V.A. Medical Center in Louisville, Kentucky.

Jane's mother wrote in the 1947 issue of The Angelos pictured at left: "A woman with a medical career is successful in direct proportion to her own efforts." No doubt she would have been proud to see her daughter honored by their alma mater.



### Medicine—A Career For Women

By Eva-Jane Ostergren Larson, M.D.

Dr. Eva-Jane Ostergren Larson

THE FRANCHISE of medicine as a career for a woman is an interesting, revealing, and respected profession. It is not generally known that women have been members of the medical profession since antiquity. Such prominent figures as Queen Cleopatra and Helen of Troy were versed in the arts of medicine. From the time past with the old women of the tribes aiding their kinsmen there came a succession of female practitioners which follows through the High Priestesses and Queens of Egypt, the learned women of Greece, the puritan Bostonesses, the midwives of the Middle Ages, and the courageous Americans who finally proved their place in the medical world. As I write, it is exactly 100 years ago, November 1867, that Elizabeth Blackwell became the first woman allowed to matriculate in an American medical school. She entered Hobart College at Geneva, New York, and two years later received her diploma. Gradually more and more medical schools in America and in other countries admitted women and there are now excellent opportunities for women to study medicine.

Now that the opportunities for medical education for women are open for the asking, the next requirement is that a girl who thinks she wants to be a doctor has a real desire to achieve her goal. The competition for a place in medical school is here and if one isn't determined to be a doctor, the preparation to get into medical school and the preparation to get on again isn't worth the trouble. Cherry Colewell, Sigma Beta, who is now taking her internship in Waterbury, Connecticut, says, "When it comes to study I

medicine, you've got me! I just have always wanted to, that's all. I started to make a living at it, until something better came along. Regardless of what happens, they can't take the education and training away from me, and whenever I do I'll always be using much of what I've learned. I like it very much and I'm not sorry in the least."

My sister, Lenore Ostergren Nimlos, M.D., 1945, Sigma Beta, says that she went into medicine for a combination of reasons including her sister, her dad, and her high school biology teacher. About Dad she says, "Dad has always been a cheerful and satisfied with his own life even when he was in debt he could hardly keep his eyes open, that I figured there must be something about his work to keep him happy since he didn't have time for anything else. He has been a good example and I am proud of him."

I did start me on the path of medicine, too, with weekly piles of counting my hours when he had finished reading comics and taking me on Sunday rounds at the hospital. The idea crystallized in my high school biology course. In general, interest in medicine is usually started by a favorite professor in the field and/or an interest in science that paves the way to thinking about the best use of a scientific education. The course is long and confusing but Cherry's record of activities in the University may help that fact somewhat. However, I am sure that all the women I know who have graduated from medical school had that the first one worth it. A great many branches of medicine present themselves to the new graduate. General prac-

Dr. Lenore O. Nimlos

tice, pediatrics, obstetrics, internal medicine, and to some extent surgery and psychiatry have the disadvantage of uncertain hours, but there are other fields such as radiology, eye, ear, nose and throat, public health, industrial medicine and pathology (if you prefer post-mortem people) which have the regular and desirable hours that seem to be in tune with the times. The specialties take two or three more years of training.

My experience has been in general practice. Each new patient is a different problem and the hours in the office slip by quickly, as I see a variety ranging through an infant with a feeding problem, a boy with a cold, a young woman with vomiting of pregnancy, and an overweight woman. Learning to know the families as one does in general practice, and gains an insight into many troubles and helps a little in hearing the friendly "Hello Doc" on the street. A doctor gains a tolerance for human frailties and an understanding of people that is hard to match in any other field.

Some other discouraging things about medicine for women should be mentioned. In some parts of the country there exists prejudice against women doctors among their male colleagues. We are not aware of this in Minnesota either in the medical school or in practice. There are hospitals which, with various excuses, do not admit women as interns. It is true that one inadequate woman intern can spoil it for others whereas one poor man would be an unfortunate circumstance but would not affect those who follow. This puts the practitioner of the future on upon her merits to act and do her best.

Perhaps the greatest problem for a woman doctor is that of adjusting her home life with her career if she is married and has a family.

No one knows more than a doctor just how much children need their mother for care and guidance. A full time practice with a family cannot be carried on without a really good housekeeper, and even then the children lose something. One must make a choice between the two and I am satisfied to put medicine in the background for awhile until my children are older. My sister, too, plans to return to medical practice later and thus we will justify what we spent and what she spent on our education.

Medical education, although an expensive one, is not entirely just if used in housework. The exacting requirements of chemistry are good training for the chemistry of cooking. The sterile cleanliness of a hospital creates an awareness of changing dirt if not the loss of doing it. The care of people makes raising a family a calmer and more enjoyable occupation.

Of the women doctors I know I cannot think of one who is not well adjusted and very satisfied with her choice of a career. If my words give encouragement to the girls who really want to be doctors, that is fine, but I advise my girl to go into it because someone else wants her to. Grateful women patients especially will always agree to the fact that there is a need for women doctors. A woman with a medical career is successful in direct proportion to her own effort. She is rewarded by the pleasure of giving service to others.

Lenore Nimlos: The first physician in the first great crisis was often in harm's way, despite which at the University of Minnesota five-foot-tall, 100 lbs., the author, was secretary, the vice president of Alpha Xi Delta, the first female, married, medical society. She is now the Guild Chaplain, Rochester, Minnesota. Her husband, Dr. Lenore O. Nimlos, M.D., and her two children, Jane, J., and Peter, live on the farm and her mother lives in the nation. From the new nurses she was in full time. She holds the B.S., M.S., and M.D. degrees from the University of Minnesota.

CHERRY COLEWELL—ALUMNAE

There are hospitals which, with various excuses, do not admit women as interns. It is true that one inadequate woman intern can spoil it for others whereas one poor man would be an unfortunate circumstance but would not affect those who follow. This puts the practitioner of the future on upon her merits to act and do her best.





## 1. KAPPA ALPHA-FLORIDA STATE

### EMILY EGGART JAMES

Emily has been named an Outstanding American Woman in the Arts, a signature member of the Florida Watercolor Society and a Woman of Initiative by the Community Foundation of Collier County. She serves on the FSU Dean of Arts advisory board and shares her time and talent with local schools and many charities. View Emily's art at [www.emilyjamesart.com](http://www.emilyjamesart.com).

## 2. ALPHA EPSILON-TENNESSEE/KNOXVILLE

### HALEY HOLMAN EVANS

Haley's personal experience as a mother of three teenagers prompted her to publish *Hung Up: Why You Should Put the Phone Down*, a guideline for cell phone etiquette. The book includes a quiz and a seven-day challenge to help readers recognize and overcome smartphone addiction. For more information, go to [www.thebighangup.com](http://www.thebighangup.com) and follow @thebighangup on social media.

## 3. RIO GRANDE VALLEY

The Rio Grande Valley, Texas, AC partnered with Children's Advocacy Center of Hidalgo County to create a play therapy room that will help children who have experienced abuse express their needs and feelings. In addition to securing a \$6,500 Kappa Delta Foundation KiDs grant for the project, AC members "showered" the center with needed items. From left are Debra Tobin Burch, Carol Mason Hudsonpillar, Jenny Cummings, Julianne Radosevich Rankin, Norma Salinas Cardenas and Debbie Cameron Prukop.

## 4. EPSILON IOTA-MISSOURI

### SALLY HALL HANSON

SouthSide Early Childhood Center Executive Director Katie Rahn, at right, presented the Champion for Children Award to Sally in recognition of her work as a member of the center's advisory council and program committee. Sally also leads Kappa Delta's St. Louis Alumnae Chapter, which was cited during the gala as a vital asset to the center for many years.

## 5. GREATER CINCINNATI, GAMMA NU-MIAMI, OMEGA XI-CINCINNATI

At its annual Reach for the Stars event, the Council on Child Abuse honored the Greater Cincinnati Alumnae Chapter, Gamma Nu-Miami and Omega Xi-Cincinnati as "stars" in the community for supporting COCA through their annual Shamrock events. ♦





# kappa did it:

## COLLEGIANS

### DELTA TAU-MOREHEAD STATE MAKAYLA ARNETT

Makayla serves as the student representative on the national Order of Omega board of directors. Order of Omega is a leadership honor society for Greek student organizations. Membership is based on excellence in academics and demonstration of strong character, leadership and service to others. It is limited to the top 3% of fraternity and sorority juniors and seniors on a campus.

Each year, only one undergraduate in the country is selected to serve on the national board. This individual must be an exemplary student, mature in attitude and judgment, and actively involved with an Order of Omega chapter. Makayla served as 2018-2019 president of Morehead's Gamma Omega Chapter of Order of Omega and currently serves as its vice president.

Stace Sievert, Morehead State coordinator of fraternity and sorority life and student organizations, describes Makayla, a senior biomedical science/pre-med major, as "high achieving both inside and outside the classroom. She is articulate and knows the value of investing in the people around her, be they Best Buddies participants, her lab partners, her co-workers on the Campus Activities board or Kappa Delta sisters."

Makayla says: "My aspiration for this position is to positively impact the Greek organizations nationwide. My biggest plan is to allow resources to be better accessible for our members through technological advancements and social media. I am very excited for this opportunity and to represent Kappa Delta."

*Photo courtesy Tim Holbrook,  
Morehead State University*

*National Order of Omega  
board of directors*





### 1. ETA ALPHA-TEXAS A&M/COLLEGE STATION SHAELYN STACY

Pursuing her longtime passion for outer space research, Shaelyn spent the past spring semester at NASA Langley Research Center where she studied the material properties of hypersonic vehicles at the point at which they reenter the Earth's atmosphere. At Texas A&M, she is majoring in mechanical engineering and minoring in mathematics.

### 2. ZETA THETA-NEW JERSEY KARLIE LOMBARDI AND MORGAN KLEY

The College of New Jersey's cheer squad, including Karlie and Morgan, won the Open All Girls Division at the 2019 Universal Cheerleaders Association and Universal Dance Association College National Championship held at Walt Disney World Resort in Orlando, Florida. This prestigious event featured 5,500 competitors representing 255 cheer and dance teams from 42 states and 10 countries.

### 3. BETA DELTA-UTAH STATE KAILEY FOSTER

Kailey garnered first place in her first collegiate regional Dairy Challenge. As a member of the Dairy Science Club, she spent two days analyzing a farm and its practices and records. She also manages social media for the organization. Prior to coming to Utah State, Kailey participated for nine years in the dairy club in her home state of Rhode Island.

### 4. GAMMA IOTA-SAN JOSE STATE JANETH CANSECO

Working with the Spartan Summer Institute and Spartan Scholars programs, Janeth has helped incoming freshmen transition from high school to college and achieve academic success. She says, "Programs like these have given me the opportunity to share my story, give advice, be a role model and make a difference in others' lives."

### 5. ALPHA XI-LOUISVILLE LEKHA DEVARA

Lekha is a member of U of L's Bhangra team, which performs traditional Indian folk dances at various competitions and school functions, such as raiseRED, an 18-hour dance marathon that raises money to fight pediatric cancer and blood disease. This year, she served on the executive board for raiseRED and as director of Derby City Dhoom, an intercollegiate Bhangra/Fusion dance competition hosted by the Indian Student Association. ♦



# FOUNDERS DAY MESSAGE

FROM NATIONAL PRESIDENT TRICIA RUMA SPENCE

As the national president of Kappa Delta Sorority, I want to wish all of the collegiate and alumnae members of our amazing sisterhood a happy Founders Day.

On Oct. 23, 1897, four pioneering women at State Female Normal School were forward-looking when they established our sorority. Through their work, the way was paved for us. We must continue this important legacy and build our future.

Would Julia, Lenora, Mary and Sara recognize Kappa Delta today? The short answer is yes. Indeed, I believe they would be incredibly proud that the sorority is thriving, and our mission has not wavered. We remain a national organization for women committed to:

- Encouraging members to live with integrity and honor in the bonds of lifelong friendship;
- Building confidence in members to help them excel in college and throughout their lives;
- Inspiring members to be active leaders, responsible citizens and engaged members of the community; and
- Providing opportunities and experiences that foster personal and professional growth for a lifetime.

Our founders would be amazed at the size and impact of our sorority. But I am convinced that as we continue to grow, our culture and values will remain central and constant because they resound across time.

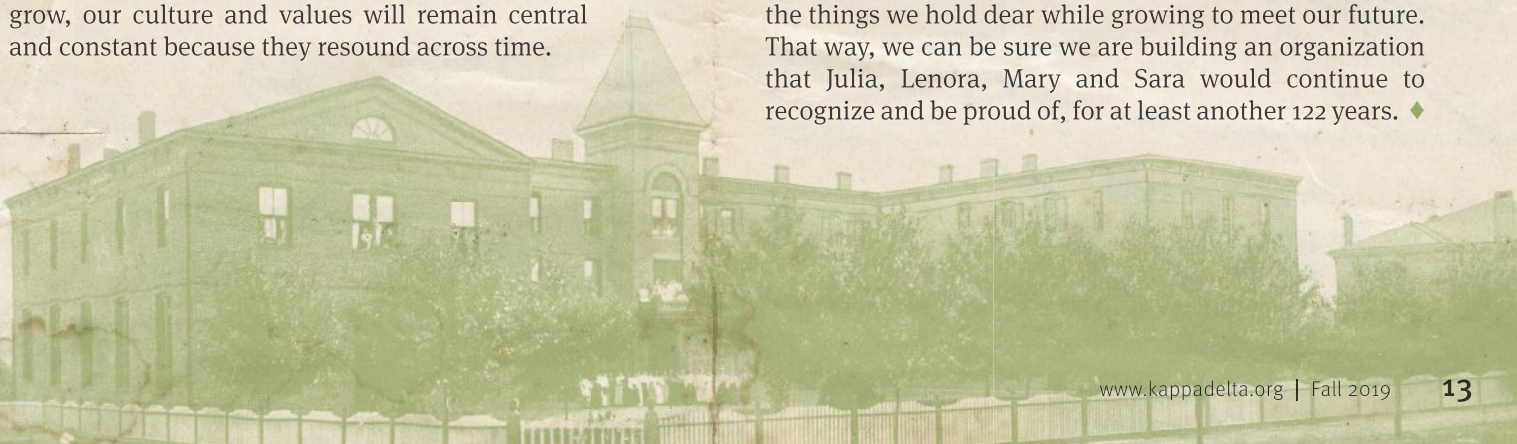
If our founders visited a Kappa Delta chapter today, they would see our increasing numbers of diverse members. They would be impressed by our efforts to make our organization's values relevant and inclusive in today's world.

From the first time we hear Kappa Delta's Ritual, we choose to embrace our founders' vision and KD's values. In this respect, nothing has changed. We have an amazing sisterhood committed to all that is honorable, beautiful and highest.

Our focus on women's empowerment is not new. It is embedded in our history. Kappa Delta is an organization founded by women, for women and run by women. We continue to seek members who embody our lifelong commitment to strong values and leadership who can build on the vision of our founders.

For well over a century, Kappa Delta has been committed to building strong, confident women. The programming and activities may look different, but the outcome is the same. The Kappa Delta membership experience builds skills and connections that prove valuable for a lifetime.

One of the leaders I look to, Jim Weddle, the managing partner of Edward Jones from 2005-2018, has often said, "It's about making sure our video matches our audio." We must remain vigilant about putting our values into practice, every day — steadfastly focused on preserving the things we hold dear while growing to meet our future. That way, we can be sure we are building an organization that Julia, Lenora, Mary and Sara would continue to recognize and be proud of, for at least another 122 years. ♦







*This page, from left: Danielle Watts, Molly Glime, Elizabeth Bridges, Lori Wallace, Alexis Lazarus, Christina Lawler, Lyndsay Wilcox, Paige Whiting, Caroline Azem and Haley Keck; opposite page, from left: senior LDCs Alexis Lazarus, Lori Wallace, Lyndsay Wilcox and Christina Lawler*



# LDCs Lead with Confidence

Ten exceptional Kappa Delta women from across the country will serve as leadership development consultants this academic year. They will provide direction and support to Kappa Delta collegiate chapters while building confidence in individual members and chapter leaders.



## APPLICATIONS AND REFERRALS WELCOME:

Kappa Delta collegians interested in serving as a leadership development consultant for the 2020-2021 academic year must submit their applications by Nov. 1, 2019. Information regarding the process and the link to the application form are available at [www.kappadelta.org/opportunities/leadership-development-consultants](http://www.kappadelta.org/opportunities/leadership-development-consultants). A complete application packet includes the submission of the 2020-2021 LDC application form with a photo and two letters of recommendation from a campus contact and a KD advisor.

Alumnae may refer an outstanding collegian regardless of her year in school. The LDC referral form is available on the Kappa Delta website. ♦

## MEET THE 2019-2020 LEADERSHIP DEVELOPMENT CONSULTANTS

### SENIOR LDCs:

**CHRISTINA LAWLER**  
Alpha Mu-Mississippi

**ALEXIS LAZARUS**  
Sigma Mu-George Washington

**LORI WALLACE**  
Alpha Chi-Louisiana Tech

**LYNDSAY WILCOX**  
Epsilon Epsilon-Appalachian State

### FIRST-YEAR LDCs:

**CAROLINE AZEM**  
Omega Chi-Cornell

**ELIZABETH BRIDGES**  
Sigma Lambda-Auburn

**MOLLY GLIME**  
Alpha Rho-Maryland

**HALEY KECK**  
Theta Kappa-Northern Arizona

**DANIELLE WATTS**  
Eta Epsilon-South/Sewanee

**PAIGE WHITING**  
Beta Sigma-Southern Mississippi

# go confidently

SISTERS IN KAPPA DELTA —  
FRIENDS BY CHOICE



BY KATHY DAVIS STURGIS, PH.D.,  
DELTA ETA-SOUTH FLORIDA

I felt relieved after pouring my heart out to my best friend over lunch. Sighing, I told her, “Thanks for making me feel like myself again.”

Without hesitating, she gently and lovingly chuckled, “You are yourself.”

My outpouring felt messy to me, but she was right there with me. Those little words reassured me, telling me that she knew me and accepted me just the way I am.



Kappa Delta is with us during some of the most formative times in our lives. Friendship moments like these offer the soothing mantras that keep us moving forward as women of action. They contain the universal words we all long to hear:

- You matter.
- You are loved.
- You are worthy.
- You are not alone.
- You are making a difference.

Although I joined KD many years ago, the memories of my chapter sisters are still strong, and it makes me smile to think about them. I also remember the women mentors who recognized the strength in me and showed me what it meant to lead. In my mind, I still hear them whisper positive messages of worthiness. They tell me there is work to do in this world. They tell me that, with my sisters, I can make the world a better place — that we are making the world a better place.

This is Kappa Delta: a place where friendship blooms, a place that nurtures us and helps us grow, a place where meaningful contributors and contributions take shape, a place that is always there to welcome us home.

There are so many reasons to connect and/or reconnect with our sisters. And new friendships, connections and sources of support are always waiting for us.

If you still aren't convinced, here are three reasons to connect and reconnect with Kappa Delta sisters:

### 1. FRIENDSHIP IS GOOD FOR OUR HEALTH.

Friendship is actually good for us! Research has consistently shown that friendship matters. It enriches our lives and boosts our physical and mental health. The topic of friendship has received consistent attention from wellness professionals at the Mayo Clinic and

the Gallup organization, which is well-known for its national and global research. Harvard Business Review supports the benefits of friendship, noting “the number and strength of our friendships have long been a consistent predictor of emotional well-being.” (See HBR’s *Being Too Busy for Friends Won’t Help Your Career* 2017).

### 2. WE HAVE THE “FRIENDSHIP ADVANTAGE.”

Like great teams, great friendships are built upon shared values and commitments. This strong foundation is the “friendship advantage” that makes it possible for us to do more and be more. Kappa Delta provides a framework for our work in this world — apart from one another and together. Although I have not talked to some of my sisters in years (something I hope to rectify as a result of writing this article), I feel safer knowing the common bond that fuels their leadership in all settings. It is an honor-bound commitment to integrity, service, learning, truth and loyalty. We summon these values in the raising of our families and the shaping of our communities, nonprofits, corporations, etc. Together we strive for that which is honorable, beautiful and highest.

### 3. FRIENDSHIPS CELEBRATE DIFFERENCES.

As sisters in Kappa Delta, we cannot help but be different from one

another. Therein lies our strength. Kappa Delta nurtures and creates a space for our differences. KD provides timeless opportunities to grow, learn and share our talents. We are not limited by our cultural differences. We are bound by a deeper truth — the kind of truth that is a foundation for genuine connection and positive relationships. Our differences give us strength. Our sisterhood gives us purpose.

### CALL TO ACTION: MAKE A LIST OF SISTER-CHAMPIONS.

Maintaining connections can be challenging in today’s world — *unless* you have a sisterhood bond and an invitation that lasts a lifetime. If friendships make us healthier and happier, then there is a world of possibility waiting for us within Kappa Delta.

Who are the sisters who have been the soothing balm or motivating force in your lifetime? Kappa Delta’s International Women’s Friendship Month and Founders Day prompt us to remember, reaffirm and reconnect with our KD sisters, but there’s no need for you to wait for another year to roll around. Go ahead, make a list and begin making those connections.

I am proud to say that I am a Kappa Delta. And I am proud of you, my sisters. You matter. You are loved. You are worthy. You are not alone. You are making a difference. Thank you. ♦



*Kathy Sturgis holds a doctorate in communication. She is an organizational development expert, retreat leader, keynote speaker and author. As founder of Refreshment Zone, she reinvigorates people, systems and processes. Visit [www.RefreshmentZone.com](http://www.RefreshmentZone.com) to read more of Kathy’s writings and/or book an engagement.*



📺 Click here in the digital edition of *The Angelos* or go to [www.kappadelta.org/](http://www.kappadelta.org/) stories to view the Discover Kappa Delta video and other stories.





DISCOVER

KAPPA

DELTA

## OUR KD STORIES:

KELSEY, GRACEY, ARA, HANNAH,

BROOK, EMMA, AUDREY,

GABRIELA, ADANNA, MIKAYLA,

TAYLOR AND MADDIE

BY HEIDI MOORE ROY, DIRECTOR OF COMMUNICATIONS

---

When's the last time you discovered something unexpected?

Cautiously stepped into a situation you thought would be one thing because of what you heard from a friend or saw in the media only to discover it was something completely different.

And better. And worthwhile.

---

At the opening session of Kappa Delta's 63rd Biennial National Convention, attendees previewed Kappa Delta Sorority's newest initiative, *Discover Kappa Delta*, a campaign to promote the benefits of sorority membership in a society all too ready to find fault. The national campaign ran for 12 weeks, from July through mid-September 2019, and included videos, blogs and social media posts featuring 48 Kappa Delta collegians from chapters across the country.

Of the 48 collegians, 12 were chosen to travel to National Headquarters in Memphis, Tennessee, in April 2019, to

be filmed. In the process, they discovered lifelong friends. Nicknamed the "Ta Kala 12," their bond was instantaneous.

"People talk about how different chapters are nationwide, and they are very different," explains Audrey Moeglin, Epsilon Omega-Kentucky, "But there is something that brings us together, and that's so evident in how quickly we all became friends."

With a variety of interests, backgrounds and experiences, each represents what it means to be a Kappa Delta today. Together, they are breaking the stereotypes of sorority.

## KELSEY KEY

*When I joined Kappa Delta Sorority, I discovered a group of empowering women who transformed my view on what it's like to be in a sorority today.*

When Kelsey Key, Theta Xi-North Carolina/Wilmington, headed off to college, she was on the fence about going through recruitment until 20 minutes before it began. “Kappa Delta made me feel welcome,” she says. “I wish every potential new member knew that joining a sorority is the exact opposite of what the media portrays.”

Kelsey served her chapter as vice president-standards and developed greater empathy and leadership skills in the process. “Uplifting the women around me has had a direct impact on my own confidence,” she says. “It has allowed me to understand what it means to be a sister. I only have an older brother, but now I have a hundred sisters.”



## GRACEY MAXWELL

*KD offers members the chance to pursue their interests with a team of women behind them cheering loudly.*

“I thought it would be hard to balance athletics with being in KD, but the two actually complement each other,” shares Gracey Maxwell, Alpha Iota-California/Los Angeles. “The strength of unity can be found in sororities, much like it can in sports.”

Sports has been an important part of Gracey’s life since childhood, and that interest continues in college. She is a manager of the UCLA gymnastics team.

Gracey’s interests extend beyond sports. She has worked in Japan; studied abroad in Beijing, China; and volunteered at an orphanage in Nepal. After college, she plans to pursue social entrepreneurship in Asia.



## ARA GONZALEZ

*Kappa Delta is a community of strong women who are different shapes and sizes and come from different cultures and backgrounds.*

Ara Gonzalez, Epsilon Rho-Rochester, a first-generation student from Paraguay, South America, discovered the powerful international network Kappa Delta provides. She met a KD sister from another chapter while on a mission trip in Togo, West Africa, more than 5,000 miles from her home in the U.S. “There was something that united us,” Ara shares. “We were taking the values we learned from Kappa Delta and taking action.”

Ara feels lucky to have found a group of women who support and celebrate diversity and value her contributions to the chapter. “When I came to the U.S., I was very insecure about my own abilities. After joining Kappa Delta, I grew so much in confidence,” she says. With encouragement from her KD sisters, she plans to work in international diplomacy upon graduation.







## HANNAH EDELEN

*I discovered new opportunities to succeed.*

Having experienced a challenging family life, Hannah Edelen, Eta Eta-Northern Kentucky, never thought college was possible until a high school teacher encouraged her to pursue higher education. She headed off to NKU and participated in recruitment.

When Hannah became a member of Kappa Delta, she discovered new possibilities. “My KD sisters embraced me and empowered me to find my voice,” she shares. “Now, I’m student body president on a campus of more than 15,000 students.”

Over the course of her campaign, there were days she questioned if she was good enough. Her KD sisters encouraged her, reminding her of the special qualities that make her a leader.



## BROOK BILLINGS

*Empowered women empower women.*

Upon joining Kappa Delta, Brook Billings, Beta Lambda-Georgetown, found friends who share her values and want the best for her, something she felt she lacked prior to college. She found support not only from her chapter but also from chapter advisors.

“As chapter president, I had an alumna advisor who mentored me,” shares Brook. “She connected me to an internship opportunity that jump-started my career, an experience I didn’t expect to gain through Kappa Delta. I discovered our network of strong women is invaluable.”

She credits the sorority with helping her develop professional skills, such as time management, conflict resolution, event planning, communication, marketing and managing people.



## EMMA HUNDLEY

*Because of stereotypes you see in the media and on TV, my parents weren’t very supportive when I joined a sorority.*

“I am the first person in my family to go Greek, and that decision was met with quite the uproar,” shares Emma Hundley, Omega Xi-Cincinnati. “Now, my entire family is grateful that Kappa Delta helped me become the confident leader I am today.”

Emma credits her role as vice president-finance and the support of a KD sister with helping her grow personally and professionally. “I was connected through a KD sister to a job at a tech start-up, which ignited a new passion and changed my career path,” she says. Emma has since connected other Kappa Deltas with internships.

Her advice for potential new members: “When you’re going through recruitment, remember to connect with women who embody the values you find important.”

## AUDREY MOEGLIN

*Each of us possess a fire within us for something important. We inspire each other to advocate for what we believe in.*

While leading her chapter's community service efforts, Audrey Moeglin, Epsilon Omega-Kentucky, discovered a passion for making a difference. She recently participated in a 4,000-mile race with a KD by her side to raise money for cancer research, a cause close to her heart.

"I was grateful for the visits from many KD sisters along the way and dozens of letters at every mail stop," she says. "It was a constant reminder of the value of sisterhood. On days it was hard, hot and hilly and my legs did not want to run, they showed me how to run with my heart."



## GABRIELA GONZALEZ

*We learn to respect those with different views, interests and abilities, and we support each other, regardless.*

While growing up, Gabriela Gonzalez, Zeta Iota-Saint Louis, took great effort to cover her hearing aids. "I was anxious about going through recruitment and hid the fact I was deaf," says Gabriela. "Then I discovered KD — a group of women who celebrate one another's uniqueness."

The Zeta Iota Chapter members ignited her confidence. "I knew I was at home and that I could be myself around these women. I could put my authentic self forward," Gabriela remembers. They even learned American Sign Language to better communicate with her. "I was just so blown away. I'll never forget they did that for me," she says.



## ADANNA NEWBY

*Because we build each other up, KD women feel confident and ready to take on the world.*

Adanna Newby, Theta Rho-George Mason, wasn't convinced sororities were for her. No one in her family was in a sorority or fraternity. She was intrigued when Kappa Delta established a new chapter on her campus and decided to join. In doing so, she discovered a strong support system that helped her through difficult times. "Shortly after joining KD, my parents divorced, and my mom was battling ovarian cancer," she remembers. "I can't imagine getting through that without my KD sisters around me."

Adanna is a founding member of her chapter and served as vice president-member education. "I fully believe that being in KD has been critical to my personal growth, and I know I'm a better person for being a sister of this sorority," she says.







## MIKAYLA ASHER

*Kappa Delta enlarges your world view and encourages you to follow your passions.*

Mikayla Asher, Sigma Zeta-Michigan, headed off to college with plans to study pre-med. It was there she discovered Kappa Delta was establishing a new chapter, and she jumped at the opportunity to be a part of the founding class. Through Kappa Delta, Mikayla discovered support and acceptance. “Sorority life is so much more than I expected,” she shares. “I truly found family.”

Mikayla discovered a love of communications while serving as vice president-public relations for the chapter. “That experience and academic support from the women of KD led me to pursue a second major in communications, in addition to pre-med,” she says.



## TAYLOR SHENNETT

*Kappa Delta doesn't try to change you. It offers a safe space where you can become the best version of yourself.*

Two days after her birth, Taylor Shennett, Zeta Omega-Memphis, was left on the steps of an orphanage. She was a girl born during China's one-child rule that limited each family to one child, and boys were the preference. At 9 months old, Taylor was adopted by a Caucasian family in the United States.

Through the years, she often struggled with her identity as an Asian American. “When I joined Kappa Delta, I met other Asian American women and was able to explore and celebrate my heritage,” she shares. “For the first time, I saw women I could relate to and look up to.”

Five years ago, Taylor was inspired to start a blog where she shares her experiences as an adoptee. Her dream is to one day write a children's book.



## MADDIE McLAIN

*I joined Kappa Delta because I saw the women I one day wanted to be.*

When Maddie McLain, Eta Iota-Pace, moved to New York City for college, she found a home away from home in Kappa Delta. “I was apprehensive to go through recruitment because I didn't fit the sorority girl stereotype that we see in the media. As time went on, I realized the women I looked up to as leaders on campus had one thing in common — they were all KDs!”

Kappa Delta inspired Maddie to become a leader on campus and in her chapter. By participating in the chapter's community service efforts with Girl Scouts, she discovered her potential to make a lasting impact on the world. She is now an intern at Girl Scouts' national headquarters in New York.

Maddie offers sound advice to potential new members: “Each campus is different, and each chapter is unique. Whether you connect with someone because you're from the same hometown or geek out over the same book series, you will realize ‘sorority girls’ might be just like you.” ♦





# FIVE WAYS CONVENTION INSPIRED US

BY SHERRY EGAN ANDERSON,  
ANGELOS EDITOR



**K**appa Delta hosted the 63rd Biennial National Convention June 27-June 30 at the Sheraton Dallas. With the theme *Inspire*, this convention promised to do more than educate and entertain attendees. It promised to inspire them to take action as members of a powerful network of women.

Convention was filled with opportunities to be inspired.

First-time attendees were not the only ones to feel “wowed.” It was awe-inspiring to look across the banquet hall at the more than 1,100

KDs gathered and realize Kappa Delta’s national reach. It was amazing to bond with sisters from across the country and understand Kappa Delta is a small world after all. It was uplifting to see alumnae who forged their friendships decades ago and to realize that Kappa Delta truly is for a lifetime. It was empowering to link arms in the circle of sisterhood and know that each of us is stronger together.

Inspiration came from the words of our Ritual and from the shared traditions of Kappa Delta’s 122-year history.





Inspiration came from the individuals who led the general sessions, breakouts and training. Convention speakers often make us laugh and sometimes make us cry. This year's dynamic speakers also made us think. They made us evaluate our lives. They built our confidence to trust our instincts, to live by our values. They inspired us to return home ready to take action on our campuses and in our communities.

Convention provided opportunities to hone our leadership skills, to network with others in our fields, to

serve as mentors and mentees. Collegiate and alumnae chapter delegates demonstrated their leadership when they elected the National Council and approved the revised National Bylaws.

One of the most impressive moments was the first glimpse of the silver and crystal on center stage at the Awards Banquet. But even more impressive was the realization of the effort that went into earning each of these awards. We left inspired by the members and chapters that were recognized for their exceptional achievements.

Convention was filled with opportunities to be inspired if we opened ourselves to the possibilities.

#### CONVENTION PHOTOS:

*Most of the convention photos featured in this article are courtesy of Digital Pix. Convention photos are available for purchase at [dpcpix.zenfolio.com/inspirekd](http://dpcpix.zenfolio.com/inspirekd). Enter password: inspirekd.*



*Clockwise from top left: National Convention brings together generations of KDs, recognizes membership milestones and provides plenty of fun photo ops.*



SISTERHOOD 1



# 2 RITUAL & TRADITIONS



*Clockwise from top left, convention traditions include performances by the Convention Chorus, the friendship circle as the closing activity, the White Rose Toast, the Memorial Service and the Parade of Flags.*



# 3 DYNAMIC SPEAKERS

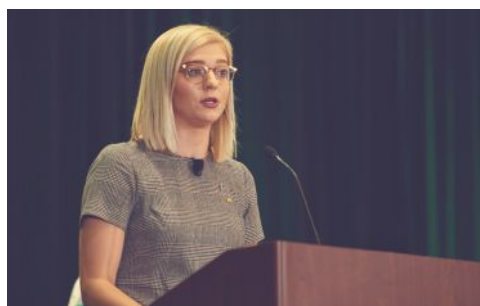
One of the most powerful presentations ever delivered at a convention came from the softest of voices: those belonging to Rae Ann Gruver and Evelyn Piazza, the mothers of Max Gruver and Timothy Piazza who died from hazing incidents. Along with Max's cousin Katy Feldner, Beta Pi-Florida, they shared the personal stories behind the news that made national headlines. With voices that caught while tears were fought, they described the young men who eagerly embarked on their college careers and lost their lives cruelly and needlessly.

"You can stop the cycle," Rae Ann told audience members. "Taking action takes courage, and it is not always the easy or the most popular thing to do. Speaking up will not be the easy choice, but it will be the right choice, and it may save someone's life. You need to say no to hazing and tell your sisters to say no to hazing."

Evelyn Piazza urged the Kappa Deltas to remember how much it

hurts to have someone damaged or gone from your life. "Don't be the person who does this to someone and destroys their family and friends as well as your own future and that of your parents ... Consider the consequences. Don't think it won't happen. Because it does. It did ... please listen to us and don't haze."

Other convention speakers challenged and inspired Kappa Deltas to follow through on their promises, to be accountable for their actions, to be brave and to support one another — in other words, to be true to themselves and each other, living up to their Kappa Delta values.







*This page, clockwise from top: foundation luncheon speaker Kristy Weber, M.D.; breakout speaker Leslie Nwoke; facilitator Corre Anding Stegall with panelists Alexis Cooper, Kalynn Gates and Julianne Taylor; author Alex Sheen.*

*Opposite page, clockwise from top right: speakers Rae Ann Gruver, Evelyn Piazza and Katy Feldner.*

*Opportunities to hear these speakers were made possible by grants from the Kappa Delta Foundation.*

## INSPIRATIONAL TAKEAWAYS:

**“The promises we make and keep define our character.”**

— ALEX SHEEN, *BECAUSE I SAID I WOULD* AUTHOR

**“If you take one baby step toward being brave, toward conquering your fear and achieving your dream, you’ll be running, and it won’t be scary anymore.”**

— ALEXIS COOPER, BETA DELTA-UTAH STATE, MISS UTAH STATE

**“When you’re uncomfortable, you’re growing. That’s a good thing to be.”**

— KALYNN GATES, ALPHA LAMBDA-OREGON, ACCESSONE SENIOR VICE PRESIDENT

**“Raise each other up when there’s nothing in it for you. It will pay back tenfold.”**

— JULIANNE TAYLOR, SIGMA PHI-GEORGIA, JULIANNE TAYLOR STYLE AND TAYLOR BURKE HOME FOUNDER

**“Own your choices and take some risks. Be courageous. It’s not easy going against the tide but that’s where we have real leaders.”**

— KRISTY WEBER, M.D., AMERICAN ACADEMY OF ORTHOPAEDIC SURGEONS PRESIDENT



# LEADERSHIP 4





from left: Pamela Nix, Sarah Smith Dubbert, Laura Beth Hanson McKew, Susan Stockton, Tricia Ruma Spence, Karen Thomas Fesmire, Tove Bichel Thomas, Julie Landgren Johnson



# MEET KAPPA DELTA'S 2019-2021 NATIONAL COUNCIL

## NATIONAL PRESIDENT

**TRICIA RUMA SPENCE**

Epsilon Alpha-Missouri S&T

## NATIONAL VICE PRESIDENT

**SUSAN STOCKTON**

Delta Gamma-Western Kentucky

## NATIONAL VICE PRESIDENT- MEMBERSHIP

**KAREN THOMAS FESMIRE**

Beta Tau-Vanderbilt

## NATIONAL VICE PRESIDENT- COLLEGIANS

**LAURA BETH HANSON McKEW**

Delta Gamma-Western Kentucky

## NATIONAL VICE PRESIDENT-ALUMNAE

**TOVE BICHEL THOMAS**

Omicron-Illinois Wesleyan

## NATIONAL VICE PRESIDENT-FINANCE

**SARAH SMITH DUBBERT**

Epsilon Iota-Missouri

## NATIONAL PANHELLENIC CONFERENCE DELEGATE\*

**JULIE LANDGREN JOHNSON**

Sigma Psi-North Dakota State

## EXECUTIVE DIRECTOR\*

**PAMELA NIX**

Sigma Phi-Georgia

*\*ex officio member*

*To learn more about these exceptional women who will lead Kappa Delta this biennium, click here in the digital edition or go to [www.kappadelta.org/about-us/leadership/](http://www.kappadelta.org/about-us/leadership/).*

# RECOGNITION 5





## COLLEGIATE CHAPTER AWARDS

### COUNCIL AWARD

Alpha Chi-Louisiana Tech

### MERIT AWARD

Alpha Chi-Louisiana Tech  
Alpha Delta-Rhodes  
Alpha Mu-Mississippi  
Alpha Rho-Maryland  
Alpha Upsilon-Birmingham-Southern  
Beta Chi-North Carolina/Chapel Hill  
Beta Delta-Utah State  
Beta Lambda-Georgetown  
Beta Rho-San Diego State  
Beta Upsilon-Susquehanna  
Beta Zeta-South Carolina  
Delta Gamma-Western Kentucky  
Delta Zeta-Louisiana/Monroe  
Epsilon-Louisiana State  
Epsilon Tau-Clemson  
Eta Iota-Pace  
Eta Upsilon-North Carolina State  
Gamma Kappa-Louisiana/Lafayette  
Kappa Alpha-Florida State  
Mu-Millsaps  
Xi-Pittsburgh

### ACHIEVEMENT AWARD

Alpha Kappa-Oregon State  
Alpha Xi-Louisville  
Beta Kappa-Tennessee/Chattanooga  
Beta Mu-Bowling Green State  
Delta Delta-Troy  
Delta Iota-Murray State  
Delta Omega-Mississippi State  
Eta Beta-Bradley  
Eta Lambda-Franklin & Marshall  
Eta Omega-Kennesaw State  
Gamma Delta-East Tennessee State  
Gamma Epsilon-Florida Southern  
Gamma Omicron-Wayne State  
Sigma Epsilon-Texas  
Sigma Sigma-Iowa State  
Theta Alpha-Quinnipiac  
Zeta-Alabama  
Zeta Nu-Lynchburg

### RECOGNITION AWARD

Alpha Alpha-Michigan State  
Alpha Phi-Westminster  
Alpha Psi-Drury  
Alpha Theta-Vermont  
Beta Tau-Vanderbilt  
Delta Phi-Georgia Southwestern State  
Delta Mu-Newberry  
Delta Tau-Morehead State  
Delta Upsilon-Tennessee Tech  
Epsilon Iota-Missouri

Epsilon Omega-Kentucky  
Theta Delta-Dayton  
Eta Chi-Elon  
Gamma Beta-North Texas  
Nu-Oklahoma State  
Sigma Mu-George Washington  
Zeta Gamma-Arkansas  
Zeta Iota-Saint Louis  
Zeta Mu-Towson  
Zeta Pi-Furman

### CHAPTER IMPROVEMENT AWARD

Delta Pi-Middle Tennessee State  
Epsilon Alpha-Missouri S&T  
Epsilon Lambda-Alabama/Huntsville  
Epsilon Psi-Francis Marion  
Epsilon Rho-Rochester  
Epsilon Sigma-Wofford  
Epsilon Upsilon-Cal Poly/Pomona  
Eta Psi-North Carolina/Charlotte  
Eta Sigma-Arkansas/Little Rock  
Omega Xi-Cincinnati  
Phi Epsilon-Colorado State  
Sigma Omicron-Illinois  
Sigma Pi-Albion  
Zeta Kappa-Ball State  
Zeta Upsilon-Stephens

### ACADEMIC EXCELLENCE AWARD

Alpha Chi-Louisiana Tech  
Alpha Mu-Mississippi  
Alpha Pi-William & Mary  
Alpha Rho-Maryland  
Alpha Theta-Vermont  
Alpha Xi-Louisville  
Beta Alpha-Virginia  
Beta Sigma-Southern Mississippi  
Beta Tau-Vanderbilt  
Delta Eta-South Florida  
Delta Gamma-Western Kentucky  
Delta Omega-Mississippi State  
Delta Phi-Georgia Southwestern State  
Delta Tau-Morehead State  
Delta Zeta-Louisiana/Monroe  
Epsilon-Louisiana State  
Epsilon Epsilon-Appalachian State  
Epsilon Lambda-Alabama/Huntsville  
Epsilon Rho-Rochester  
Epsilon Sigma-Wofford  
Eta Chi-Elon  
Eta Eta-Northern Kentucky  
Eta Iota-Pace  
Eta Lambda-Franklin & Marshall  
Eta Mu-Georgia College & State  
Eta Phi-Boston  
Gamma Chi-Lenoir-Rhyne  
Gamma Delta-East Tennessee State  
Gamma Epsilon-Florida Southern  
Nu-Oklahoma State  
Sigma Psi-North Dakota State  
Theta Delta-Dayton  
Xi-Pittsburgh

### ACADEMIC EXCELLENCE PROGRAMMING AWARD

*(on campuses of 1-7 NPC groups)*  
Alpha Chi-Louisiana Tech  
*(on campuses of 8+ NPC groups)*  
Eta Phi-Boston

### CHRISTINE HARRISON MAGAZINE AWARD HIGHEST SALES VOLUME

*(on campuses of 1-7 NPC groups)*  
Delta Zeta-Louisiana/Monroe  
*(on campuses of 8+ NPC groups)*  
Epsilon-Louisiana State

### COLLEGIATE CHAPTER MAGAZINE AWARD HIGHEST PER CAPITA

*(on campuses of 1-7 NPC groups)*  
Epsilon Alpha-Missouri S&T  
*(on campuses of 8+ NPC groups)*  
Theta Kappa-Northern Arizona

### COMMUNITY SERVICE AWARD

*(on campuses of 1-7 NPC groups)*  
Beta Epsilon-Tulsa  
*(on campuses of 8+ NPC groups)*  
Beta Zeta-South Carolina

### COMMUNITY VISIBILITY AWARD

*(on campuses of 1-7 NPC groups)*  
Alpha Chi-Louisiana Tech  
*(on campuses of 8+ NPC groups)*  
Delta Gamma-Western Kentucky

### EXCELLENCE IN MEMBER EDUCATION PROGRAMMING AWARDS

*(on campuses of 1-7 NPC groups)*  
Alpha Theta-Vermont  
*(on campuses of 8+ NPC groups)*  
Zeta-Alabama

### FINANCIAL RESPONSIBILITY AWARD

*(on campuses of 1-7 NPC groups)*  
Delta Iota-Murray State  
*(on campuses of 1-7 NPC groups)*  
Alpha Alpha-Michigan State

### GENEVIEVE FORBES MORSE NEW-MEMBER EDUCATION AWARD

*(on campuses of 1-7 NPC groups)*  
Gamma Xi-Kentucky Wesleyan  
*(on campuses of 1-7 NPC groups)*  
Sigma Mu-George Washington

### GIRL SCOUT SUPPORT AWARD

*(on campuses of 1-7 NPC groups)*  
Theta Iota-North Dakota  
*(on campuses of 1-7 NPC groups)*  
Alpha Iota-California/Los Angeles

*Clockwise from top: Kappa Delta's highest honors go to Alpha Chi-Louisiana Tech, Epsilon Tau Chapter Advisory Board, Sigma Iota House Corporation and Greater Atlanta Day Alumnae Chapter.*



**GLADYS PUGH REDD PANHELLENIC AWARD**

*(on campuses of 1-5 NPC groups)*  
Alpha Chi-Louisiana Tech  
*(on campuses of 6-9 NPC groups)*  
Gamma Kappa-Louisiana/Lafayette  
*(on campuses of 10+ NPC groups)*  
Sigma Mu-George Washington

**JUDY HARE THORNE ANGELOS AWARD**

*(on campuses of 1-7 NPC groups)*  
Beta Upsilon-Susquehanna  
*(on campuses of 8+ NPC groups)*  
Sigma Omicron-Illinois

**MILEAGE AWARD**

Sigma Tau-Washington State

**MINNIE MAE PRESCOTT GRACIOUS LIVING AWARD**

Beta Alpha-Virginia

**MOST IMPROVED RECRUITMENT AWARD**

*(on campuses of 1-7 NPC groups)*  
Epsilon Upsilon-Cal Poly/Pomona  
*(on campuses of 8+ NPC groups)*  
Beta Psi-Arizona State

**NEW CHAPTER EXCELLENCE AWARD**

Beta Psi-Arizona State

**OPEN RECRUITMENT AWARD**

*(on campuses of 1-7 NPC groups)*  
Gamma Omicron-Wayne State  
*(on campuses of 8+ NPC groups)*  
Theta Kappa-Northern Arizona

**PATRICIA BEECHAM NIEMAN SHAMROCK EVENT AWARD**

*(on campuses of 1-7 NPC groups)*  
Delta Delta-Troy  
*(on campuses of 8+ NPC groups)*  
Epsilon-Louisiana State  
*(joint Shamrock Event)*  
Eta Omega-Kennesaw State with Greater Atlanta Day Alumnae Chapter

**RECRUITMENT EXCELLENCE AWARD**

*(on campuses of 1-7 NPC groups)*  
Eta Omega-Kennesaw State  
*(on campuses of 8+ NPC groups)*  
Epsilon Pi-Virginia Tech

**WEBSITE AWARD**

*(on campuses of 1-7 NPC groups)*  
Alpha Delta-Rhodes  
*(on campuses of 8+ NPC groups)*  
Epsilon Omicron-Central Florida

**WHITE ROSE AWARD**

Eta Delta-Wright State  
Theta Xi-North Carolina/Wilmington





## CHAPTER ADVISORY BOARD AWARDS

### OUTSTANDING CHAPTER ADVISORY BOARD Epsilon Tau-Clemson

### CHAPTER ADVISORY BOARD AWARD OF EXCELLENCE

Alpha Epsilon-Tennessee/Knoxville  
Alpha Iota-California/Los Angeles  
Alpha Theta-Vermont  
Beta Tau-Vanderbilt  
Epsilon Tau-Clemson  
Eta Chi-Elon  
Mu-Millsaps  
Sigma Iota-Washington  
Sigma Mu-George Washington  
Sigma Tau-Washington State  
Theta Kappa-Northern Arizona  
Zeta-Alabama  
Zeta Pi-Furman

## HOUSE CORPORATION BOARD AWARDS

### JOAN HOVDE HAINES OUTSTANDING HOUSE CORPORATION AWARD Sigma Iota-Washington

### HOUSE CORPORATION AWARD OF EXCELLENCE

Alpha Kappa-Oregon State  
Alpha Mu-Mississippi  
Delta Omega-Mississippi State  
Epsilon-Louisiana State  
Epsilon Alpha-Missouri S&T  
Epsilon Iota-Missouri  
Epsilon Omicron-Central Florida  
Eta Alpha-Texas A&M  
Sigma Epsilon-Texas  
Sigma Iota-Washington  
Sigma Omicron-Illinois  
Sigma Upsilon-Indiana  
Zeta Gamma-Arkansas  
Zeta Omega-Memphis

### BEVERLY AXEL SYWASSINK MOST IMPROVED HOUSE CORPORATION AWARD Alpha Delta-Rhodes

## ALUMNAE CHAPTER AWARDS

### MARJORIE ROWLES STAKES OUTSTANDING ALUMNAE CHAPTER Greater Atlanta Day

### ALUMNAE CHAPTER EXCELLENCE AWARDS

Anne Arundel County, Maryland  
Austin Hill Country, Texas  
Chicago Northwest Suburban  
Dayton, Ohio  
Detroit Tri-County  
Fort Worth, Texas  
Greater Atlanta Day  
Greater Naperville, Illinois  
Houston  
Mid-Cities, Texas  
Milwaukee  
Richardson-Plano, Texas  
San Antonio  
Twin Cities, Minnesota  
Utah

### ALUMNAE CHAPTER ACHIEVEMENT AWARD

Cleveland West  
Columbus, Ohio  
Greater Cincinnati  
Greater Marietta/Roswell, Georgia  
Gwinnett County, Georgia  
Hoover/Birmingham, Alabama  
Low Country, South Carolina  
Mountain Brook, Alabama  
Newport Harbor, California  
North Fulton County/Cumming, Georgia  
Phoenix/Valley of the Sun  
St. Louis  
Seattle Daytime  
Statesboro, Georgia  
Tallahassee, Florida  
Tucson, Arizona

### ALUMNAE CHAPTER RECOGNITION AWARD

Baltimore  
Bloomington-Normal, Illinois  
Central Arkansas  
Central Iowa  
Dallas  
Indianapolis  
Montgomery County, Maryland  
Nashville, Tennessee  
New Orleans  
North San Diego County, California  
Orlando/Winter Park, Florida  
Rochester, Minnesota  
Savannah, Georgia  
Troy, Alabama  
Western Kentucky

### ANN DONER VAUGHAN PHILANTHROPY AWARD

(40+ members)  
St. Louis

### COLLEGIATE CHAPTER SUPPORT AWARD

(in-town)  
Tallahassee, Florida  
(out-of-town)  
Greater Atlanta Day

### COMMUNITY VISIBILITY AWARD

Twin Cities, Minnesota

### ELIZABETH WINSTON LANIER PHILANTHROPY AWARD

(fewer than 40 members)  
Greater Naperville, Illinois

### GIRL SCOUT SUPPORT AWARD

Richardson-Plano, Texas

### JUDY HARE THORNE ANGELOS AWARD

Dayton, Ohio

### MAGAZINE AWARD

#### PER CAPITA

Newport Harbor, California

#### HIGHEST SALES VOLUME

Greater Atlanta Day

### MARTHA COPENING KELLSTROM AWARD FOR ALUMNAE CHAPTER PROGRAMMING EXCELLENCE

Utah

### MEMBERSHIP-BUILDING AWARD

Detroit Tri-County, Michigan

### OUTSTANDING NEW ALUMNAE CHAPTER AWARD

Gainesville, Georgia

### PATRICIA BEECHAM NIEMAN SHAMROCK EVENT AWARD

(fewer than 40 members)  
Chicago Northwest Suburban  
(40+ members)  
Richardson-Plano, Texas  
(joint Shamrock Event)  
Greater Atlanta Day with Eta Omega-  
Kennesaw State

### WEBSITE AWARD

Twin Cities, Minnesota



Order of the Emerald recipients present at National Convention

## ORDER OF THE DIAMOND

*Recognizing exceptional service to fraternal organizations*

**CAROLE JURENKO JONES**  
**ALPHA OMICRON PI**  
**NATIONAL PANHELLENIC CONFERENCE**  
**CHAIRMAN**

For more than three decades, Kappa Delta has honored a select few individuals who have advanced the mission and objectives of the sorority experience and the National Panhellenic Conference and have demonstrated the true spirit of Panhellenism. Carole made history this year when she became the first NPC chairman elected under the organization's new governance structure. She has served as chairman since 2017 when AOPi rotated into the leadership role under the previous structure, and she previously served as chairman of various NPC committees. The Order of the Diamond recognizes the esteem in which Carole is held, her integrity and dedication to the principles and high ideals upon which NPC groups were founded.

## ORDER OF THE EMERALD

*Recognizing outstanding service to Kappa Delta*

**MARGARET "PEGGIE" ARVIDSON**  
**GAMMA GAMMA-HIGH POINT INITIATE**  
**ALPHA RHO-MARYLAND AFFILIATE**  
 Alpha Pi-William & Mary CAB; Alpha

Rho-Maryland CAB; Washington, D.C., reference assistant; District of Columbia AC; Tucson, Arizona, AC; KDF Scholarship Committee; province president

**BONITA STOREY CASSUTT**  
**BETA RHO-SAN DIEGO STATE**  
 Beta Rho Outstanding Alumna Award; Sigma Sigma-Iowa State CAB; Northwest Suburban Chicago Outstanding Alumna Award; Chicagoland Coordinating Committee; Illinois State Day Committee; Akron, Ohio, AC; Central Iowa AC; Cleveland West AC; Phoenix/Valley of the Sun AC; St. Louis AC

**DEBBIE BROWNE CONWAY**  
**SIGMA UPSILON-INDIANA**  
 Sigma Kappa-Ohio State CAB; Beta Mu-Bowling Green State CAB; Columbus, Ohio, AC; Toledo, Ohio, AC's Opal Bowers Outstanding Alumna Award; Ohio reference assistant; assistant director 1997 convention; special advisor; province president; KDF Scholarship Committee; CAB specialist

**EMILIE BURDETT FRIESE**  
**SIGMA PHI-GEORGIA**  
 Eta Omega-Kennesaw State CAB, Greater Atlanta Day AC, Atlanta Panhellenic Association, Georgia State Day Carolyn Arnold Award for Outstanding Lifetime Service to Kappa Delta

**MELINDA HOWARD GOODE**  
**DELTA DELTA-TROY**  
 Zeta-Alabama house corporation; Tuscaloosa, Alabama, AC; Tuscaloosa Alumnae Panhellenic Association; collegiate membership director

**DEDE PARSONS GUEST**  
**SIGMA PHI-GEORGIA**  
 Sigma Phi-Georgia CAB and house corporation, University of Georgia Panhellenic Advisor of the Year, collegiate province president, national housing specialist

**SUE MIHELICK HICKS**  
**EPSILON TAU-CLEMSON**  
 Theta Zeta-Lehigh house corporation; Lehigh Valley, Pennsylvania, AC; collegiate province president; alumnae province president; national director of member education; collegiate chapter specialist; CAB specialist; extension specialist; Nominating Committee; KDF Scholarship Committee

**PAT TODORAN KATZ**  
**BETA THETA-PENNSYLVANIA STATE**  
 Sigma Kappa-Ohio State CAB and house corporation; Columbus, Ohio, AC; Ohio State Day; Marge Clark Outstanding Alumna Award

**JEANNE ANNE JONES MARSH**  
**DELTA LAMBDA-GEORGIA SOUTHERN**  
 Delta Lambda-Georgia Southern CAB and house corporation; Statesboro, Georgia, AC

**ELIZABETH KOEGLER MOLES**  
**XI-PITTSBURGH**  
 Eta Delta-Wright State CAB; Dayton, Ohio, AC

**TARA TRAMONTE OSBORNE**  
**GAMMA RHO-SAM HOUSTON STATE**  
 Atlanta Night AC; Greater Atlanta Day AC; North Fulton/Cumming, Georgia, AC



**JOAN QUINE PATE****ALPHA ALPHA-MICHIGAN STATE**

Outstanding Michigan Alumna Award, Gamma Omicron-Wayne State CAB, Detroit Westside AC, Greater Detroit AC, Detroit Metro KD board

**LINDA POWERS ROUTENBERG****EPSILON OMEGA-KENTUCKY**

Eta Omega-Kennesaw State CAB, Greater Atlanta Day AC

**PERI ANDRUS SEXTON****EPSILON PHI-CALIFORNIA/SANTA BARBARA**

Long Beach Cities, California, AC; AC operations specialist

**PATTI ROBERTS SMITH****GAMMA ZETA-TEXAS CHRISTIAN**

Gamma Beta-North Texas CAB; Epsilon Chi-Baylor CAB; Mid Cities, Texas, AC; Southern DFW Metroplex, Texas, AC

**ANNE BROWN WILSON****SIGMA LAMBDA-AUBURN**

Columbus, Georgia, AC; local alumnae network of Panhellenic women; Georgia reference assistant

**JENNIFER PRIEBE WOOD****ZETA GAMMA-ARKANSAS**

Zeta Gamma-Arkansas CAB, house corporation, Feasibility Study Committee, Fundraising Committee, Northwest Arkansas AC

## ORDER OF THE PEARL

*Recognizing outstanding contributions outside of Kappa Delta*

**HELEN HORLACHER EVANS****EPSILON OMEGA-KENTUCKY**

U.S. Women's Army Corps Auxiliary during World War II; WWII Memorial-Women in Military charter member; Lexington, Kentucky, Veterans Affairs Medical Center veterans advocate; Lexington Women's Club; Kentucky Federation of Women's Clubs; Lexington Seniors Hall of Fame; U.S. Army Quarter Master Hall of Fame; KD Lexington AC

**TRACY DEAN GARRETT****SIGMA IOTA-WASHINGTON**

U.S. Marine Corps major general, Africa Command special assistant to the

commander, Fujitsu Defense and National Security board, Marine Corps Scholarship Foundation board, Girl Scouts, Boy Scouts, KD Seattle AC

**DEBRA MOEBIUS HANDY****GAMMA THETA-OKLAHOMA**

YWCA of Greater Oklahoma City board, Ronald McDonald House Charities board, Girl Scouts Western Oklahoma, Juliette Low Society Luncheon Membership Committee, Panhellenic Kappa Delta Woman of the Year, KD Greater Oklahoma City AC

**KAREN ADCOCK HASTY****ALPHA EPSILON-TENNESSEE/KNOXVILLE**

Creator of the Kappa Delta Orthopaedic Research internship that provides KD collegians an opportunity to work under her leadership in a leading orthopaedic research facility

**JOY McVEY HUGICK****DELTA ETA-SOUTH FLORIDA**

Simply Joy LLC owner, Centers for Disease Control and Prevention former staff, Oley Foundation, Emory Saint Joseph's Hospital Auxiliary board, Hermitage Sandy Springs, Friends of Nursing, KD Greater Atlanta Day AC

**SUSAN MURPHY****BETA TAU-VANDERBILT**

Author of 10 books and numerous articles emphasizing the importance of self-esteem and the impact of women's friendship; KD Coachella Valley, California, AC

**PATRICIA SCHERER FLORESTANO****ALPHA RHO-MARYLAND**

Maryland secretary of higher education; University System of Maryland's board of regents; University of Maryland and University of Baltimore professor of government; KD Anne Arundel County, Maryland, AC

**EDITH (DEE DEE) SHRUM WACKSMAN****SIGMA KAPPA-OHIO STATE**

Junior League, Bay County (Michigan) Literacy Council, Girl Scouts Heart of Michigan board, Women of Achievement of Bay City/Saginaw Lifetime Achievement Award, Vital Action Citizen Award, Bay Area Community Foundation's Peggy Rowley Community Enrichment Award, Bay Area Athena Award, Delta College trustee

*AC: alumnae chapter*

*CAB: chapter advisory board*



*Order of the Pearl recipients present at National Convention*

*Former National President Corre Anding Stegall with collegiate leadership award recipients who were present at National Convention*



# FOUNDATION NAMES 2019 CORRE AWARD RECIPIENTS

The Corre Anding Stegall Collegiate Leadership Award, named for former National President Corre Anding Stegall, is presented each year to the top echelon of Kappa Delta student leaders. This award is the highest individual honor Kappa Delta gives to undergraduate members. Recipients are chosen based on their high academic performance and exemplary leadership within the chapter, on campus and in the community. Each award recipient receives a \$3,000 college scholarship to be applied to her 2019-2020 tuition.

**CORINNE BALDWIN**, Zeta Omega-Memphis  
**MADISON BREWTON**, Alpha Chi-Louisiana Tech

**WYNN BURRUS**, Beta Chi-North Carolina/Chapel Hill  
**CARLY CONE**, Alpha Delta-Rhodes  
**ELLEN DOERR**, Epsilon Tau-Clemson  
**AMELIA DOWLING**, Gamma Chi-Lenoir-Rhyne  
**HANNAH EDELEN**, Eta Eta-Northern Kentucky  
**MEGAN FRANKENBERGER**, Eta Gamma-John Carroll  
**KAITLYN GOODE**, Alpha Xi-Louisville  
**CASSANDRA HOLDCROFT**, Gamma Tau-Ripon  
**CLAUDIA KEMPER**, Alpha Chi-Louisiana Tech  
**MADISON KIM**, Epsilon Iota-Missouri  
**LAURA KING**, Delta Gamma-Western Kentucky

**KYLE KINGSTON**, Theta Gamma-Brown  
**EMILY MADLE**, Gamma Beta-North Texas  
**TAYLOR PERKINS**, Alpha Psi-Drury  
**MAUREEN REILLY**, Sigma Upsilon-Indiana  
**KENDALL RUNYAN**, Beta Pi-Florida  
**AMANDA RUVOLO**, Eta Chi-Elon  
**MADISON SEYMOUR**, Beta Sigma-Southern Mississippi  
**JORDANA TERRELL**, Alpha Delta-Rhodes  
**SHAELYN WOLFE**, Gamma Beta-Texas



# FOUNDATION CONGRATULATES SCHOLARSHIP AND GRANT RECIPIENTS

The Kappa Delta Foundation awarded 94 undergraduate and graduate scholarships totaling \$190,563 for the 2019-2020 academic year.

## 2019 UNDERGRADUATE SCHOLARSHIPS

**BETH MARTIN LANGFORD SCHOLARSHIP**  
Katie Slominski, Eta Tau-Florida Gulf Coast

**BETSY MARTIN SUNSHINE SCHOLARSHIP**  
Hannah Hill, Zeta Omicron-Wake Forest

**BETTE CHISHOLM RIKER BETA PI  
SCHOLARSHIPS**  
Cece Planeta, Beta Pi-Florida  
Emily Surgeoner, Beta Pi-Florida

**BONNIE PURVIS WARREN SCHOLARSHIP**  
Bonnie Brantley, Epsilon Tau-Clemson

**CHERYL GRANT SIZER SCHOLARSHIP**  
Katie Cavender, Omicron-Illinois  
Wesleyan

**DOROTHY RAMAGE SCHOLARSHIP**  
Hannah Jensen, Beta Epsilon-Tulsa

**DOT MEARS SCHOLARSHIP**  
Sherry Dinh, Upsilon-Beloit

**EDITH WACKSMAN SCHOLARSHIP**  
Kaitlyn Prezioso, Kappa Alpha-Florida  
State

**ELIZABETH BANTA MUELLER  
SCHOLARSHIPS**  
Amanda Ruvolo, Eta Chi-Elon  
Jenn Seabolt, Eta Kappa-Northeastern  
Meagan Wilkins, Epsilon  
Omega-Kentucky

*Foundation Chair Beth Martin Langford, front row, and former National Vice President-Collegians Lydia Barousse with scholarship recipients present at National Convention*



**ERMA METZ BROWN SCHOLARSHIPS**

Madison Carroll, Delta Omicron-Eastern Kentucky  
 Nicole Gonzalez, Beta Pi-Florida  
 Molly Trantham, Eta Omega-Kennesaw State

**ERNESTINE L. NEWMAN SCHOLARSHIP**

Taryn Blackstock, Nu-Oklahoma State

**FOUNDERS' SCHOLARSHIPS**

Molly Baldock, Alpha Xi-Louisville  
 Shreya Balusu, Sigma Zeta-Michigan  
 Haley Doerr, Delta Gamma-Western Kentucky  
 Madison Kim, Epsilon Iota-Missouri

**FRANK & VIOLET KOKEN SCHOLARSHIP**

Zoe Papa, Sigma Kappa-Ohio State

**GEORGIA STATE DAY SCHOLARSHIPS**

Lexus Butler, Delta Psi-West Georgia  
 Emerson Kleider, Eta Mu-Georgia College & State  
 Shelby Olney, Delta Chi-LaGrange

**GRACE FOLLMER AND HELEN FOLLMER LUTZ SCHOLARSHIPS**

Amber Cargill, Zeta-Alabama  
 Emily Jacknewitz, Omega Xi-Cincinnati

**GRAYCE CHASE SCHOLARSHIP**

Elizabeth Long, Delta Zeta-Louisiana/Monroe

**HELEN LAWRENCE GRYGIEL SCHOLARSHIP**

Tiffany Shafer, Sigma Iota-Washington

**HELEN WATT ALSTON SCHOLARSHIP**

Brittany DiCaprio, Beta Pi-Florida

**JACKIE PRICE DUNN MEMORIAL SCHOLARSHIP**

Jesseros Mireles, Eta Alpha-Texas A&M/College Station

**JEAN TUCKER STRADLEY SCHOLARSHIP**

Anna Gorsick, Delta Iota-Murray State

**JEAN TUCKER STRADLEY-PI CHAPTER SCHOLARSHIP**

Nicole McLaughlin, Pi-Nebraska

**JESSIE PALMITER BERRY SCHOLARSHIP**

Natalie Harris, Alpha Kappa-Oregon State

**JODI SCHEURENBRAND SCHOLARSHIP**

Vicky Trieu, Eta Iota-Pace

**JODY CORRY SCHOLARSHIP**

Amber Foote, Eta Iota-Pace

**KAITLYN DOORHY MEMORIAL SCHOLARSHIP**

Gab Ruvo, Eta Nu-Sacred Heart

**KENTUCKY KIM FLOOD RYAN SPIRIT SCHOLARSHIP**

Olivia Owen, Epsilon Omega-Kentucky

**KIMBERLY WESTERFIELD PERRY MEMORIAL SCHOLARSHIP**

Ivy Abel, Alpha Mu-Mississippi

**LULA WALKER ACCOUNTING SCHOLARSHIP**

Leah Jessee, Epsilon Omega-Kentucky

**LULA WALKER ALPHA PI SCHOLARSHIP**

Heather Rodenberg, Alpha Pi-William & Mary

**LYDIA BAROUSSE SCHOLARSHIP**

Elise Wyatt, Zeta Gamma-Arkansas

**M. AMANDA GORDON SCHOLARSHIPS**

Ilysa Crouch, Delta Upsilon-Tennessee Tech  
 Sam Parham, Gamma Chi-Lenoir-Rhyne  
 Amanda Prelewicz, Alpha Xi-Louisville

**MARGARET BUDD HAEMER SCHOLARSHIP**

Jordana Terrell, Alpha Delta-Rhodes

**MARILYN MOCK SCHOLARSHIP**

Lacey Schroeder, Zeta Gamma-Arkansas

**MARILYN SANDERSON THOMPSON SCHOLARSHIP**

Darci Walton, Zeta Gamma-Arkansas

**MARION DAY MULLINS SCHOLARSHIP**

Ansley Fleming, Epsilon Tau-Clemson

**MARY ATKINS HANNA SCHOLARSHIP**

Makenzie Compton, Alpha Chi-Louisiana Tech

**MINNIE MAE PRESCOTT KAPPA DELTA STAFF RISK MANAGEMENT SCHOLARSHIP**

Emma Reaney, Epsilon Sigma-Wofford

**MISSISSIPPI SCHOLARSHIP**

Megan Wadsworth, Alpha Mu-Mississippi

**MURIEL JOHNSTONE SCHOLARSHIPS**

Rachel Pait, Delta Gamma-Western Kentucky  
 Rachel Stander, Sigma Pi-Albion

**PAM BARTON STAPLES SCHOLARSHIP**

Casey Maloney, Epsilon Gamma-North Georgia

**PHYLLIS M. MEISNER KAPPA DELTA PRESIDENT'S RISK MANAGEMENT SCHOLARSHIP**

Hanna Zwerver, Theta Gamma-Brown

**REED & GLORIA PENINGTON SCHOLARSHIP**

Suzanne Rhodes, Zeta Beta-Union

**ROSE-MARIE GARCIA ANDERSON BETA TAU SCHOLARSHIPS**

Helena Augenstein, Beta Tau-Vanderbilt  
 Lauren Nam, Beta Tau-Vanderbilt

**ROSE-MARIE GARCIA ANDERSON GAMMA NU SCHOLARSHIPS**

Carolyn Sindelar, Gamma Nu-Miami  
 Madeleine Whissell, Gamma Nu-Miami

**RUTH ROUSE DOLBERG SCHOLARSHIP**

Carlee Dawkins, Zeta-Alabama

**SARAH AND MELISSA BETA RHO SCHOLARSHIP**

Female Montes, Beta Rho-San Diego State

**SARAH DAVIES KRAVIK SCHOLARSHIP**

Chloe Birchfield, Sigma Tau-Washington State

**SIGMA UPSILON SCHOLARSHIP**

Hannah Rudolph, Sigma Upsilon-Indiana

**SIGMA ZETA SCHOLARSHIPS**

Ewelina Papiez, Sigma Zeta-Michigan  
 Megan Ziembowicz, Sigma Zeta-Michigan

**SUE JOHNSON ERNEST MEMORIAL TEXAS ALUMNAE SCHOLARSHIP**

Abby Whitehead, Sigma Epsilon-Texas

**VADA MAY CORKERY STATE OF WASHINGTON SCHOLARSHIP**

Roni Farkash, Sigma Iota-Washington

**VIRGINIA COWAN PIERSON ETA ALPHA SCHOLARSHIP**

Stephanie Simpson, Eta Alpha-Texas A&M/College Station

**VIRGINIA COWAN PIERSON MU SCHOLARSHIP**

Lindsey Osbon, Mu-Millsaps

**WESLEY H. & MARYBEL R. FLINT BUTLER ALPHA KAPPA SCHOLARSHIPS**

Kendyl Druffel, Alpha Kappa-Oregon State  
 Natalie MacMillan, Alpha Kappa-Oregon State



Josie Shannon, Alpha Kappa-Oregon State  
Allie Zinn, Alpha Kappa-Oregon State

## 2019 GRADUATE SCHOLARSHIPS

### ALPHA CHI CHAPTER GRADUATE SCHOLARSHIP

Anna Morris, Alpha Chi-Louisiana Tech

### ALUMNA GRANT FOR CONTINUING EDUCATION SCHOLARSHIP

Elizabeth Kunder, Alpha Iota-California/Los Angeles

### BARBARA GIBSON FROEMMING SCHOLARSHIP

Jessica Stepp, Delta Tau-Morehead State

### DOROTHEA B. CAVIN SCHOLARSHIPS

Kristen Krueger, Sigma Gamma-Kansas State  
Annie Robertson, Alpha Chi-Louisiana Tech

### HELEN A. SNYDER SCHOLARSHIP

Sarah Rothman, Eta Lambda-Franklin & Marshall

### HERFF JONES GRADUATE FELLOWSHIP

Natalie Ferand, Zeta Alpha-Texas Tech

### JANICE E. ARNETT CONTINUING EDUCATION SCHOLARSHIP

Meghan Taylor-Steshyn, Beta Pi-Florida

### JANICE E. ARNETT GRADUATE SCHOLARSHIPS

Rebecca Falls, Mu-Millsaps  
Lauren Johnson, Epsilon Omega-Kentucky

### JANICE E. ARNETT SCHOLARSHIP FOR LEADERSHIP & VOLUNTEERISM

Teresa Theiling, Epsilon Epsilon-Appalachian State

### JESSIE PALMITER BERRY SCHOLARSHIP

Jessica Kingery, Alpha Kappa-Oregon State

### KAILASH, MONA & ANILA JAIN SCHOLARSHIP

Caitlin Green, Theta Theta-Rhode Island

### MINDY SOPHER SCHOLARSHIP

Leslie Merritt, Delta Pi-Middle Tennessee State

### MINNIE MAE PRESCOTT SCHOLARSHIP

Wendi Wang, Sigma Pi-Albion

### MURIEL JOHNSTONE SCHOLARSHIP

Megan Bottoms, Alpha Xi-Louisville

### PAMELA NIX MBA GRADUATE SCHOLARSHIP

Brooke Newbern, Theta Eta-Old Dominion

### TRICIA RUMA SPENCE SCHOLARSHIP

Nicolette Glidden, Alpha Delta-Rhodes

### VOLUNTEER SCHOLARSHIP

Nicole Collins, Omega Chi-Cornell

### WINIFRED HILL BOYD SCHOLARSHIP

Christina Sego, Delta Gamma-Western Kentucky

At the foundation's Inspire Action luncheon, eight newly endowed scholarships were announced. They are:

### BETSY MARTIN SUNSHINE SCHOLARSHIP

### BONNIE DUNBAR STEM SCHOLARSHIP

### GLADYS REYNOLDS BROWN SCHOLARSHIP

### HELEN WATT ALSTON SCHOLARSHIP

### JULIE LANDGREN JOHNSON PANHELLENIC LEADER SCHOLARSHIP

### KAITLYN DOORHY MEMORIAL SCHOLARSHIP

### KIMBERLY WESTERFIELD PERRY MEMORIAL SCHOLARSHIP

### REED AND GLORIA PENINGTON AND PAT BRICKEL SCHOLARSHIP

## INTERNSHIPS AND UNDERGRADUATE INTERFRATERNITY INSTITUTE

The Kappa Delta Foundation funds leadership training and professional development experiences that provide opportunities for collegiate members to explore their individual leadership styles and hone skills that benefit both their personal and professional aspirations.

### O'KEEFFE ART AND LEADERSHIP INTERNS

Allyson Damante, Eta Lambda-Franklin & Marshall  
Anna Daniels, Alpha Mu-Mississippi

### ORTHOPAEDIC RESEARCH INTERNS

Addison Cantor, Gamma Epsilon-Florida Southern  
Maya Pande, Alpha Lambda-Oregon  
Caroline Pennacchio, Eta Xi-Dartmouth  
Eleanor Petyak, Epsilon Tau-Clemson

### UNDERGRADUATE INTERFRATERNITY

#### INSTITUTE ATTENDEES

Cristina DeMattos, Epsilon Upsilon-Cal Poly/Pomona  
Lexington Lemmon, Sigma Mu-George Washington  
Emory Loescher, Sigma Mu-George Washington  
Sophie Ritchie, Eta Upsilon-North Carolina State  
Allison Starkenburg, Alpha Kappa-Oregon State  
Kylie Transki, Zeta Rho-San Diego

## KIDS GRANT RECIPIENTS

KiDs Grants provide individual alumnae and alumnae chapters the ability to support programs and initiatives of nonprofit organizations that directly affect families and children in their communities. Eight KiDs Grants, totaling \$25,000, were awarded. They are:

**AUSTIN HILL COUNTRY, TEXAS, ALUMNAE CHAPTER** received a \$1,800 grant on behalf of Girl Scouts of Central Texas to increase access for at-risk middle and high school girls to impact service learning, college and career readiness and advocacy education.

**HOUSTON ALUMNAE CHAPTER** received a \$5,000 grant on behalf of Texas Children's Hospital in support of an early brain development program, delivered free of charge to families in the Greater Houston community.

**JULIANNE JOHNSON PAUNESCU, ALPHA DELTA-RHODES**, received a \$4,800 grant on behalf of FAIR Girls Vida Home to provide resources for female survivors of sex and labor trafficking to apply for jobs, keep up with schoolwork and stay in touch with friends and family.

**MARISA REPICI NYE, SIGMA KAPPA-OHIO STATE**, received a \$2,650 grant on behalf of the Junior League of Columbus Inc. that will supply 320 backpacks filled with school supplies to children in the Franklin County, Ohio, foster care system.

**ORLANDO, FLORIDA ALUMNAE CHAPTER** received a \$1,750 grant on behalf of the Harbor House of Central Florida, Inc. to support Camp HOPE America, a camp

that supports children who have witnessed violence in the home.

**SAN ANTONIO ALUMNAE CHAPTER** received a \$3,000 grant on behalf of ChildSafe to purchase items for the music and therapy program benefiting victims of sexual assault and domestic abuse.

**TRACY KEPPEL LEONARD, SIGMA PI-ALBION**, received a \$3,000 grant on behalf of Darkness to Light to educate 200 adults in the San Francisco Bay area on how to identify, report and prevent sexual abuse in children.

**TULSA, OKLAHOMA, ALUMNAE CHAPTER** received a \$3,000 grant on behalf of Family and Children's Services to plan and implement the inaugural SUN (socks, underwear and necessities) Drive to benefit children who are victims of sexual abuse or other traumatic experiences. ♦



*KiDs Grant recipients present at National Convention with KDF Chair Beth Martin Langford*

# SEND A ROSE

The White Rose Garden was in full bloom at National Convention.

**IN TOTAL, MORE THAN 6,400 VIRTUAL ROSES WERE SENT BY MORE THAN 1,000 DONORS, RAISING MORE THAN \$56,000.**

Donations support the urgent needs of Kappa Delta Sorority, including the leadership and educational programming provided at National Convention.

Still want to participate in the fun? You are in luck! The White Rose Garden is open year-round at [donate.kappadelta.org](https://donate.kappadelta.org).

A Kappa Delta virtual rose is the perfect way to celebrate your sisters, friends and family. Surprise your loved one with a personalized message that is sent to them immediately. Use the sister-search feature to find KDs from any chapter. Rose donations begin at just \$5 each.





## MEET THE KAPPA DELTA FOUNDATION

# board of directors

Foundation board elections were held at the Kappa Delta Foundation board of directors meeting on June 26, 2019. The foundation is excited to welcome newly elected directors Jodi Scheurenbrand and Laura Freedman Magedoff. The board also elected Beth Martin Langford as chair, Michelle Parmley Rabideau as vice-chair and Sue Brauer Mickelberg as secretary-treasurer. Jody Jenkins Corry and Bonnie Purvis Warren announced their retirement from the board. Bonnie and Jody have been instrumental in the foundation's past achievements and defining a vision for future success. Their experience on the National Council provided invaluable perspective as the board and council work together toward a greater and better Kappa Delta. The foundation board thanks them for their years of service and incomparable gifts of time and talent.



Front row, from left: Karen Fesmire, Tricia Spence, Beth Langford, Jodi Scheurenbrand; back row, Pamela Nix, Jaynee Groseth, Sue Mickelberg, Kristin Power, Cheryl Sizer, Michelle Rabideau, Susan Stockton; not pictured, Patty Cappart and Laura Magedoff.

### 2019-2021 KAPPA DELTA FOUNDATION BOARD:

#### CHAIR

**BETH MARTIN LANGFORD**  
Kappa Alpha-Florida State

#### VICE-CHAIR

**MICHELLE PARMLEY RABIDEAU**  
Sigma Omicron-Illinois

#### SECRETARY-TREASURER

**SUE BRAUER MICKELBERG**  
Sigma Sigma-Iowa State

#### PATTY GRAHAM CAPPAERT

Beta Sigma-Southern Mississippi

#### KAREN THOMAS FESMIRE

Beta Tau-Vanderbilt

#### JAYNEE DRANGE GROSETH

Sigma Omega-Montana State

#### LAURA FREEDMAN MAGEDOFF

Zeta Lambda-Delaware

#### KRISTIN POWER

Epsilon Kappa-Cal Poly/San Luis  
Obispo

#### JODI SCHEURENBRAND

Kappa Alpha-Florida State

#### CHERYL GRANT SIZER

Epsilon Eta-Illinois State

#### TRICIA RUMA SPENCE

Epsilon Alpha-Missouri S&T

#### SUSAN STOCKTON

Delta Gamma-Western Kentucky

#### EX OFFICIO MEMBER

**EXECUTIVE DIRECTOR PAMELA NIX**  
Sigma Phi-Georgia ♦

## Janna Fredregill McKale

SIGMA SIGMA-  
IOWA STATE

### BACKGROUND:

Epsilon Tau-Clemson  
Chapter Advisory Board  
member

Emerald Giving Society  
member

KDF Scholarship Committee  
and Corre Awards  
Committee former member

*Janna, seated, serves on Epsilon Tau-Clemson's chapter advisory board with Judy Hebert, Sue Meehan and Clarice Gustafson, pictured from left.*



# inspired action

BY RACHEL JOINES SHOUSE, KDF  
DEVELOPMENT SENIOR MANAGER

When Janna moved to Clemson, South Carolina, in 1979 for her husband's new job, she had no idea she would soon be embarking on a 40-year journey with the newly established Epsilon Tau Chapter. Janna joined the chapter advisory board and has been an influential volunteer, serving in numerous roles, including chairman. This year, the Epsilon Tau CAB won Kappa Delta's top award for chapter advisory boards.

"Four of us have been together ever since," says Janna of her fellow CAB volunteers: Clarice Gustafson, Delta Pi-Middle Tennessee State; Judy Hebert, Sigma Phi-Georgia; and Sue Meehan, Epsilon Tau-Clemson. "It's worked really well because everyone pulls their weight, while reaching out to help anytime they're needed. They are always stepping up with great ideas, laughter and love. What a blessing they are!"

And Janna has been a blessing to KD. When two of her Sigma Sigma sisters encouraged Janna to become involved with a campaign to renovate their chapter house, Janna obliged. This would be her introduction to the Kappa Delta Foundation as her gifts to Sigma Sigma's educational and technology fund passed through the foundation.

Janna says, "I recalled my experience living in the Sigma Sigma house. That crucial time had a

lasting impact on me, indeed on the rest of my life. What I learned at the house — the social and leadership skills — and friendships I made with my KD sisters endure today."

Working closely with collegians, Janna has experienced the excitement of sisters who benefit from opportunities offered through the foundation. She's also witnessed her gifts come full circle after serving on the foundation's Scholarship Committee. "I see firsthand where KDF money goes in providing opportunities for young women to achieve greater confidence. Seeing women receive educational benefits from the foundation makes any donation most rewarding."

At National Convention, Janna was reminded of the foundation's reach. "I had no idea how many sisters I would meet from all across the USA. The foundation plays a crucial role in sponsoring and supporting such meetings that help educate undergraduates and alumnae.

"Giving to the foundation is one of the ways I've chosen to give back to KD for all that the sorority has meant to me and my life. I benefited so much from those who came before me in KD. I feel a duty to contribute what I can to the sorority and its young women today and in the future." ♦



# SISTORY

THE MORE THINGS CHANGE,  
THE MORE THEY ARE THE SAME



The favor for the 1919 convention was a gold pencil engraved "KD-1919." It is one of two favors that are missing from the Kappa Delta convention favor collection. The other is a 1929 silver and glass sweet meat basket (candy or nuts) with the KD seal on the side. If you have any favors from a KD convention that you might be willing to donate to the KD archives, please email [Shirley.Gee@kappadelta.org](mailto:Shirley.Gee@kappadelta.org).



BY SHIRLEY MCCANN GEE, ARCHIVES  
MANAGER

By 1919, Kappa Delta had opened 34 chapters. Around 80 members attended the National Convention held that summer in Estes Park, Colorado, including four women who would eventually serve as president of Kappa Delta. They were Rebecca Smith, Elizabeth Corbett, Sarah Blue and Olga Achtenhagen.

Kappa Delta began the 2019 convention in Dallas, Texas, with about 1,100 signed up to attend. Were there four or more women who will serve as president in the future? Olga attended as a collegiate delegate. Most assuredly several bright young women in attendance in 2019 will serve Kappa Delta someday.

The slogan for the 14th convention was the practical *Education and Efficiency*. This year, the theme was *Inspire* — quite idealistic and optimistic!

In 1919, "the chief business of the Convention was the careful study and later adoption of the Constitution and bylaws ..." This year, a main concern for convention delegates was the revision of the National Bylaws. Another tidbit from the summary of the 1919 gathering included the following: "... the Chapter House Loan Fund was established; thus, another very progressive step in the development of the sorority was taken." Housing continues to be an important issue a century later.

One difference in the two conventions concerned leisure time.

This year, one evening was set aside to give attendees the opportunity to visit Dallas shops, restaurants and museums. In 1919, there was more time than usual devoted to leisure activities. A dance was held the first night with favors, food and even a full orchestra — everything but men. There was a "beefsteak fry and Kappa Delta sing" on the second day, and the next day, for the first time, attendees were given a full day to explore the area. With convention taking place at the foot of the Rocky Mountains, the women road horses, hiked and took picnic lunches up the mountain to see the picturesque area.

Both conventions shared the White Rose Banquet the last night with a toast and songs. Convention traditions link the generations. ♦



# SELFLESS SERVICE



On the final night of the 2019 National Convention, during the White Rose Banquet, Kappa Deltas thanked retiring National Council members Barb Hamilton Stacy and Jodi Scheurenbrand for their service and wished them well in their future endeavors. Both women will be remembered for having Kappa Delta's best interest in their hearts and minds.



*Above: Barb Hamilton Stacy;  
at right: Jodi Scheurenbrand  
at Kappa Delta's 2019  
National Convention*



**B**arb served as national vice president-collegians 2015-2019, capping her consistent leadership roles since joining Kappa Delta as a founding member of Zeta Kappa Chapter at Ball State University. Following graduation, she traveled as a chapter development consultant and then went on to volunteer for KD locally with Zeta Kappa's chapter advisory board and the Cleveland West Alumnae Chapter and nationally as a collegiate province president and collegiate membership director. She did all this while earning a master's degree and pursuing a career in human resources and information management. Barb also is a registered yoga instructor and barre enthusiast.

Providing one of Barb's tributes at convention, Johnna Lorenzano, who serves on Zeta Kappa's CAB, had this to say: "Barb Stacy's commitment to Kappa Delta, her active and healthy lifestyle, and her kind and generous heart are just a few of the things that make Barb a true sister and role model." On behalf of the chapter, Johnna presented a plaque and donation to the Kappa Delta Foundation in Barb's honor. In addition, a framed white rose print by Kappa Delta Georgia O'Keeffe was donated to the Office of Greek Life at Ball State University where it hangs in recognition of Barb's "fierce commitment to fraternity and sorority life."

Barb shares the "why" behind her strong commitment to Kappa Delta and the fraternal world:

#### **Why did you choose to be a leader in Kappa Delta?**

*From the moment I pledged, I couldn't wait for the next*

*opportunity. The women in our organization have always challenged me to do better, be better and to give of my talents. Kappa Delta has been a constant in my life — always there for me and shaping me into the woman I am today. The beauty of our sisterhood is expressed through kindness, thoughtfulness and patience, which shape us into strong, confident women without us realizing it. I feel it is my responsibility to give back and pay forward all the kindness and leadership I have been shown.*

#### **How did you grow as a leader through your National Council experience?**

*I developed a stronger awareness and recognition that leading is not about me — it is about meeting the needs of Kappa Delta. I became comfortable in the discomfort of getting outside of my personal perspective and stretching to see and respond to the needs of the organization, specifically our collegians and their advisors.*

#### **How has Kappa Delta built your confidence?**

*I don't see confidence as tied to a position within the organization — confidence is tied to the work that one does, how one approaches life, and the value one adds to an organization. Kappa Delta gives each of us a platform, a voice and the opportunity to lead every day. Being a Kappa Delta means you choose to lead, and through our membership experience we stand up, speak up and build up our campuses and communities.*

Jodi shares her Kappa Delta experience:

#### **How did serving on the National Council enhance your overall KD experience?**

*One of Kappa Delta's greatest strengths is our huge and diverse network of women, all joined by our common bond. When I began serving on National Council six years ago, I never would have imagined making so many new friends that I know I will have in my life well beyond my National Council years.*

#### **How did you grow as a leader through your National Council experience?**

*One thing is certain: While our opinions may differ on any particular matter, we are all aligned in our motivation to want what is truly best for our organization. Seeing and realizing that has helped me become more open to alternate points of view.*

#### **How has Kappa Delta inspired you to action?**

*Through Kappa Delta, I have discovered my passion for and commitment to promoting financial education, an essential life skill, among our members — both at the collegiate and alumnae levels. ♦*

**S**erving as national vice president-finance 2013-2019, Jodi brought to Kappa Delta more than 30 years of experience in corporate and nonprofit finance. Most recently, she was chief financial officer for several private schools in New York City. Her résumé also includes vice president-treasurer of Toys 'R Us, senior vice president-controller for Atari and director of planning and analysis for RJR Nabisco. She earned an MBA in finance and economics and is a certified public accountant. She has served Kappa Delta as the National Finance Committee chairman, Investment Advisory Committee member, Confidence Coalition Advisory Committee member and Eta Iota-Pace chapter advisory board member.

Beth Martin Langford, Kappa Delta Foundation chair and former national president, was in a unique position to speak about Jodi at the White Rose Banquet. The two women began a lifelong friendship when they joined Kappa Alpha Chapter at Florida State University and served together on its council. In 2013, Kappa Delta gave them the opportunity to work together on the National Council. Beth said: "Her work and contribution to the financial growth and stability of Kappa Delta has been brilliant and monumental ... I am thrilled that Jodi will continue to serve Kappa Delta as a newly elected director on the foundation board."

# in memoriam

AS REPORTED TO NATIONAL HEADQUARTERS  
MAY 1, 2019, TO JULY 31, 2019

**ALPHA ALPHA  
MICHIGAN STATE**

Betty Brown Mitchell

**ALPHA EPSILON  
TENNESSEE/KNOXVILLE**

Avon Anderson Howell  
Joann Steadman

**ALPHA KAPPA  
OREGON STATE**

Joanne Wood Karlson

**ALPHA MU  
MISSISSIPPI**

Gloria Sayers Baker  
Sandra Shook Haney

**ALPHA PI  
WILLIAM & MARY**

Ann Warrington Braz

**ALPHA RHO  
MARYLAND**

Elizabeth Cissel Lynt  
Darcy Gallagher O'Connor  
Ruby Branch Woodhead

**ALPHA UPSILON  
BIRMINGHAM-SOUTHERN**

Carol Nix Brugh

**ALPHA XI  
LOUISVILLE**

Susan Herman Doolittle

**BETA ALPHA  
VIRGINIA**

Margaret Kennon Colmenares

**BETA DELTA  
UTAH STATE**

Patricia Colyar Brown

**BETA GAMMA  
MONMOUTH**

Judy Stafford Denniston  
Jean Robb Huntoon

**BETA MU  
BOWLING GREEN STATE**

Bonnie Bayliss Carper  
Eileen Flahiff Wise

**BETA NU  
TOLEDO**

Judith Karchner Henrion

**BETA PHI  
WEST VIRGINIA**

Katherine Kemp Sanford

**BETA PI  
FLORIDA**

Dorcas Pickinpaugh Corman Herche  
Elizabeth Fuss Steeg  
Evelyn Hale Trickel-Nobles

**BETA PSI  
ARIZONA STATE**

Mary Thompson Chafey

**BETA RHO  
SAN DIEGO STATE**

Mary Lou Phillips Jones

**BETA SIGMA  
SOUTHERN MISSISSIPPI**

Betty Farr Kruger  
Loretta Beths Tucker

**BETA TAU  
VANDERBILT**

Rhonda Stockton Portley

**BETA XI  
COLORADO**

Mary Conklin Hovey

**BETA ZETA  
SOUTH CAROLINA**

Julia Fuller Jones  
Frances Bouknight Tyler

**DELTA ETA  
SOUTH FLORIDA**

Vicki Wallenfels Ahrens

**DELTA TAU  
MOREHEAD STATE**

Charlene Jones Clemons  
Deborah McFarland Gould

**DELTA UPSILON  
TENNESSEE TECH**

Laura Wiles Spilman

**EPSILON  
LOUISIANA STATE**

Carla Collier Johnson

**EPSILON DELTA  
AUSTIN PEAY**

Jean Royse Thibodeau

**EPSILON OMEGA  
KENTUCKY**

Eleanor House Withrow

**EPSILON OMICRON  
CENTRAL FLORIDA**

Jenna Christine Reynoso



**ETA ETA**  
**NORTHERN KENTUCKY**  
 Whitney Lynne Crank

**GAMMA DELTA**  
**EAST TENNESSEE STATE**  
 Carolyn Griffith Worsley

**GAMMA EPSILON**  
**FLORIDA SOUTHERN**  
 Susan Jane Ernst

**GAMMA GAMMA**  
**HIGH POINT**  
 Sue Butt Cook

**GAMMA MU**  
**VALDOSTA STATE**  
 Norma Maxwell Tomberlin  
 Frances Adams Vann

**GAMMA OMICRON**  
**WAYNE STATE**  
 Darcy Shafer Bor

**GAMMA SIGMA**  
**EAST CAROLINA**  
 Kathy Koonce Riggs

**LAMBDA**  
**NORTHWESTERN**  
 Judith Allen Benson

**MU**  
**MILLSAPS**  
 Sarah Mcinnis Allen  
 Sarah Posey Smith

**NU**  
**OKLAHOMA STATE**  
 Caroline Keith White

**OMEGA XI**  
**CINCINNATI**  
 Lynne Moore Chace  
 Nancy Vanmeter Parker

**OMICRON**  
**ILLINOIS WESLEYAN**  
 Judith Anderson Hillegonds  
 Marilyn Dibler Leigh

**PHI EPSILON**  
**COLORADO STATE**  
 Lorna Sobey Snyder

**PHI TAU**  
**BUCKNELL**  
 Kay Reiner Shive-Henry

**PI**  
**NEBRASKA**  
 Alice Prang Hayward  
 Lila Wanek Klasek

**SIGMA BETA**  
**MINNESOTA**  
 Mary Reese Smith

**SIGMA ETA**  
**ST. LAWRENCE**  
 Joan Braddon

**SIGMA IOTA**  
**WASHINGTON**  
 Sally Fabbri Hile

**SIGMA KAPPA**  
**OHIO STATE**  
 Virginia Phillips Beckett Gakle  
 Janet Sohn Jones  
 Patricia Thompson Miller

**SIGMA LAMBDA**  
**AUBURN**  
 Allyson Armistead Allred

**SIGMA NU**  
**SYRACUSE**  
 Marilyn Hait Cobert

**SIGMA OMICRON**  
**ILLINOIS**  
 Dee Perry Billmeier

**SIGMA PHI**  
**GEORGIA**  
 Elizabeth Dunker Gibson

**SIGMA PSI**  
**NORTH DAKOTA STATE**  
 Muriel Kotschevar Stringer

**SIGMA THETA**  
**PENNSYLVANIA**  
 Grace Verrati DeFeo

**SIGMA UPSILON**  
**INDIANA**  
 Elizabeth Reed

**TAU**  
**WISCONSIN**  
 Janet Duncan Brodhead  
 Emelyn Sappington Severson

**THETA**  
**RANDOLPH-MACON**  
 Mary Grossmann McNeer  
 Rosemary Heinz Turner

**UPSILON**  
**BELOIT**  
 Eleanor Wootton Holtz

**ZETA**  
**ALABAMA**  
 Mamie Martin Neese ♦

*To report a deceased member, visit  
[www.kappadelta.org/alumnae-life/  
 report-a-deceased-member](http://www.kappadelta.org/alumnae-life/report-a-deceased-member) or call  
 National Headquarters,  
 800.536.1897.*

# kd poll

MEMBERS WEIGH IN

KD poll statistics on this page and #KDBCIA comments on the back cover were captured on social media by Catherine Wylie, communications coordinator. Look for future poll questions on Twitter (@KappaDeltaHQ) and Facebook and don't forget to tag your confidence-building, inspiring activities with #KDBCIA.

I MOST FREQUENTLY  
HELP OTHERS  
DISCOVER  
KAPPA DELTA BY ...



28%

WEARING KD  
BADGE/APPAREL



40%

POSTING ON  
SOCIAL MEDIA



3%

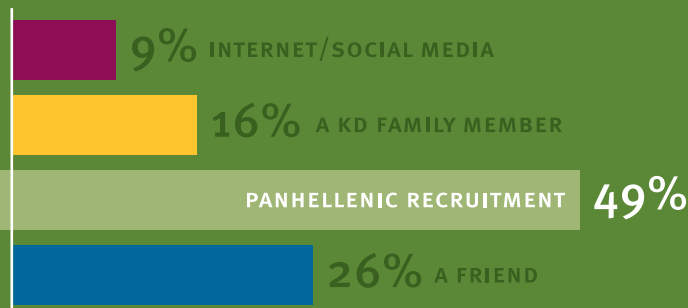
WRITING  
RECOMMENDATIONS



29%

SHARING MY  
KD STORY

HOW DID YOU  
FIRST DISCOVER  
KAPPA DELTA?

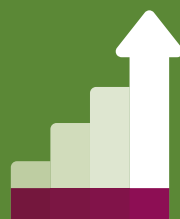


WHAT INSPIRES  
YOU MOST  
ABOUT BEING  
A KAPPA DELTA?



8%

CHAPTER  
SUCCESSSES



11%

PERSONAL  
GROWTH



49%

SUPPORTIVE  
SISTERHOOD



32%

KD'S NATIONAL  
IMPACT

WHAT DREW  
YOU TO  
KAPPA DELTA?







HERFF  JONES™

*Shop official KD jewelry at [hjgreek.com/kd](http://hjgreek.com/kd) or call 1.800.451.3304.*

*lyanna layered necklace, \$50; rory necklace, \$39; addy ring, \$35; emerald cushion ring, starting at \$128;  
pin-on badge ring,\* starting at \$96; chapter president ring, starting at \$135*

*\*Badge sold separately. For proper fitting, we strongly recommend that you send your badge to us when ordering.*

UPDATE YOUR ADDRESS:  
MEMBERS.KAPPADELTA.ORG

REPORT DEATH NOTICES:  
WWW.KAPPADELTA.ORG/ALUMNAE-LIFE/  
REPORT-A-DECEASED-MEMBER

800.536.1897 | WWW.KAPPADELTA.ORG

SUBMIT NEWS AND PHOTOS:  
KDNEWS@KAPPADELTA.ORG

# #kdbcia

How do you build confidence and inspire action?  
Share on social media using #KDBCIA.



SLU  
KAPPA DELTA



@slukappadelta Sometimes the best way to find out who you are, is to go to the place you don't have to be anything else. #AOTuesday #KDBCIA #KeepingUpWithSLUKD  
July 16, 2019



ELISABETH  
DUNBAR



@elisabethdunbar It was an honor to meet former astronaut Bonnie Dunbar while in Dallas for the Kappa Delta National convention! #kdfamous #kdbcia #hero #womenheroes #kdinspire #kappadelta @astronautdunbar @nasaastronauts @nasa @uiuckappadelta  
July 1, 2019



KAPPA DELTA  
SIGMA SIGMA



@iowastatekappadelta "As I went through primary recruitment, I knew that the conversations I had at KD were genuine and that I never felt pressure to be anyone but myself. Since then, the confidence of the women around me has been contagious and has helped me grow as a leader, student, and person. KD has given me friendships that I cherish and continues to motivate me to be my most authentic self." — Julia #isupr19 #kdbcia #discoverkd  
July 17, 2019



Kappa Delta  
TAMUC  
@KappaDeltaGU



#AOTuesday goes to our awesome President Ashley, and our beautiful alums for representing our chapter at Kappa Delta National Convention this past weekend! #KDBCIA #TAMUC #TAMUC23



5:17 PM - Jul 2, 2019



KAPPA DELTA  
UAB



@uabkd Our president, Alexa, represented our chapter for the very first time at Kappa Delta's 63rd Biennial National Convention last week! #KDBCIA #InspireKD #uabkd  
July 7, 2019



Kappa Delta at  
Ripon  
@KD\_Ripon



What do we love more than our sisters? Our Alumni! Welcome back to Ripon! #ifnotforkd #kdbcia #alumniweekend



1:49 PM - Jun 29, 2019



MICHIGAN  
KAPPA DELTA



@michigan\_kd Worried about balancing athletics, Greek life, AND academics? Find out how @kianamayer does it all: "Being an athlete, I didn't think that there was any possible way that I could also be in a sorority ... What I found is that just like anything you do in life, you get out what you put in ... I am so glad that I joined KD, it's like another team that I get to be a part of, and we all get to help make a difference together." #discoverkd #kdbcia  
July 21, 2019



KAPPA DELTA  
JOHN CARROLL  
UNIVERSITY



@jcu\_kd We are beyond proud of our sister Sarah for being selected as the Millor Orator for the 2019 commencement at John Carroll! She is the only undergraduate student speaking at the ceremony. She truly embodies that of a Kappa Delta Woman!! #kdbcia #carrollkd #sororitywomanoftheyear  
May 18, 2019